



Scaling of the elastic contribution to the surface free energy of a nematic liquid crystal on a sawtoothed substrate

José Manuel Romero-Enrique, Chi Tuong Pham, Pedro Patrício

► To cite this version:

José Manuel Romero-Enrique, Chi Tuong Pham, Pedro Patrício. Scaling of the elastic contribution to the surface free energy of a nematic liquid crystal on a sawtoothed substrate. *Physical Review E* , 2010, 10.1103/PhysRevE.82.011707 . hal-03863938

HAL Id: hal-03863938

<https://universite-paris-saclay.hal.science/hal-03863938>

Submitted on 21 Nov 2022

HAL is a multi-disciplinary open access archive for the deposit and dissemination of scientific research documents, whether they are published or not. The documents may come from teaching and research institutions in France or abroad, or from public or private research centers.

L'archive ouverte pluridisciplinaire **HAL**, est destinée au dépôt et à la diffusion de documents scientifiques de niveau recherche, publiés ou non, émanant des établissements d'enseignement et de recherche français ou étrangers, des laboratoires publics ou privés.

Scaling of the elastic contribution to the surface free energy of a nematic liquid crystal on a sawtoothed substrate

Jose Manuel Romero-Enrique,¹ Chi-Tuong Pham,² and Pedro Patricio^{3,4}

¹*Departamento de Física Atómica, Molecular y Nuclear, Area de Física Teórica, Universidad de Sevilla, Apartado de Correos 1065, 41080 Sevilla, Spain*

²*Laboratoire d'Informatique pour la Mécanique et les Sciences de l'Ingénieur, CNRS-UPR 3251, Université Paris-Sud 11, BP 133, F-91403 Orsay Cedex, France*

³*Instituto Superior de Engenharia de Lisboa, Rua Conselheiro Emídio Navarro 1, P-1949-014 Lisboa, Portugal*

⁴*Centro de Física Teórica e Computacional, Universidade de Lisboa, Avenida Professor Gama Pinto 2, P-1649-003 Lisboa Codex, Portugal*

(Received 7 October 2009; published 16 July 2010)

We characterize the elastic contribution to the surface free energy of a nematic liquid crystal in the presence of a sawtooth substrate. Our findings are based on numerical minimization of the Landau-de Gennes model and analytical calculations on the Frank-Oseen theory. The nucleation of disclination lines (characterized by non-half-integer winding numbers) in the wedges and apexes of the substrate induces a leading order proportional to $q \ln q$ to the elastic contribution to the surface free-energy density, with q being the wave number associated with the substrate periodicity.

DOI: [10.1103/PhysRevE.82.011707](https://doi.org/10.1103/PhysRevE.82.011707)

PACS number(s): 61.30.-v

I. INTRODUCTION

Topological defects are ubiquitous in many branches of physics, spanning from condensed-matter physics [1,2] to cosmology [3]. They may emerge in systems with broken continuous symmetry, and their presence can introduce essential singularities in the free energy which lead to infinite-order phase transitions such as the Kosterlitz-Thouless transition [4,5]. Liquid-crystalline phases, such as nematics, are prototypical for showing topological defects, such as point hedgehogs and disclination lines [6,7]. Topological arguments show that *within the bulk* and in three dimensions the only stable disclination lines have $\pm 1/2$ winding number [2]. The presence of substrates may induce the nucleation of disclinations with other winding numbers. Theoretically, non-half-integer disclination lines are predicted to nucleate in the cusps (wedges and/or apexes) of substrates [8–11], as well as in sharp boundaries between domains characterized by different anchoring conditions in flat surfaces [12,13]. Furthermore, there is some experimental evidence of the formation of these unusual non-half-integer disclination lines on surfaces [14].

It is well known that the nematic director field in the presence of structured substrates may be distorted, leading to an elastic contribution to the free energy. Since the seminal work by Berreman [15,16], this problem has been extensively studied and generalized in the literature [8–11,17–22]. However, most of these studies focused on smooth substrates or on the effect of isolated cusps. In this paper we will consider the effect that the disclination lines nucleating on the cups of the substrates have on the elastic contribution to the surface free energy of the nematic on periodic and cusped structures. In particular, we will consider a sawtoothed substrate which favors homeotropic anchoring. Other geometries may also be considered with our formalism, such as steplike substrates, which have been studied numerically and experimentally in the context of zenithal bistable switching in nem-

atic devices [17,23,24]. We will show that the disclination lines induce a contribution to the elastic contribution to the free-energy density (per unit projected area) which depends only on the geometric characteristics of the substrate, and that scales with the wave number q associated with the periodicity of the substrate as $-q \ln q$.

The paper is organized as follows. The different models for the nematic in the presence of a sawtooth substrate are presented in Sec. II. We focus in particular on substrates which favor homeotropic anchoring and their consequences. In Sec. III we report the numerical and analytical results obtained from these approaches. In Sec. IV we present our conclusions.

II. MODEL

We consider a nematic phase in contact with a sawtooth substrate characterized by an angle α and a side length L (see Fig. 1). At the substrate the nematic molecules preferentially align homeotropically, i.e., parallel to the local normal to the substrate. The system is translationally invariant along the

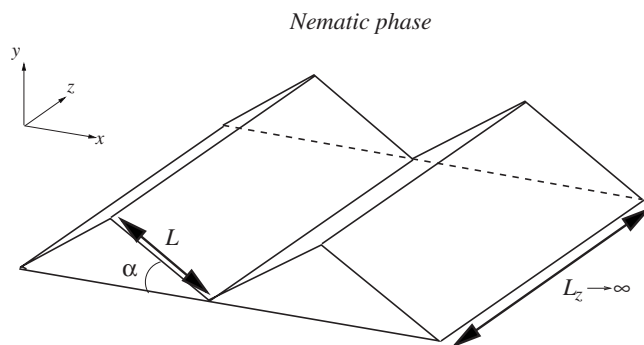


FIG. 1. Schematic picture of the geometry of the system, characterized by the side length L and the angle α .

out-of-plane axis z and periodic along the x axis. We will only consider azimuthal distortions for the nematic director \mathbf{n} , which can be parametrized in terms of the angle θ between the director and the y direction as $\mathbf{n} = (-\sin \theta, \cos \theta, 0)$. Out-of-plane or twist deformations may also be important under other conditions, as a twist instability may occur [25], but we checked numerically that they are not relevant for our choice of parameters as free-energy minimization always leads to azimuthal distorted textures. Finally, we impose that, far from the substrate, the bulk nematic phase orients homogeneously along either the x (the N^{\parallel} texture) or the y (the N^{\perp} texture) direction, which are the only relevant situations allowed by symmetry considerations. We study the orientational ordering of this system within two different models: the Landau-de Gennes (LdG) model and the Frank-Oseen (FO) model.

A. Landau-de Gennes model

In the LdG model, both isotropic and nematic phases can be locally represented by a traceless symmetric order parameter tensor with components Q_{ij} , which can be represented as $Q_{ij} = \frac{3}{2}S[n_i n_j - \frac{1}{3}\delta_{ij}] + \frac{1}{2}B[l_i l_j - m_i m_j]$, where n_i are the Cartesian components of the director field \mathbf{n} , S is the nematic order parameter which measures the orientational ordering along the nematic director, and B is the biaxiality parameter, which measures the ordering of the molecules on the orientations perpendicular to \mathbf{n} , characterized by the eigenvectors \mathbf{l} and \mathbf{m} . The LdG free energy can be written as $\mathcal{F}_{\text{LdG}} = \int_V (\phi_{\text{bulk}} + \phi_{\text{el}}) dV + \int_A \phi_{\text{surf}} ds$, where ϕ_{bulk} is the bulk free-energy density, ϕ_{el} is the elastic free-energy density, and ϕ_{surf} is the surface free energy defined as [16]

$$\phi_{\text{bulk}} = a \text{Tr } \mathbf{Q}^2 - b \text{Tr } \mathbf{Q}^3 + c [\text{Tr } \mathbf{Q}^2]^2, \quad (1)$$

$$\phi_{\text{el}} = \frac{L_1}{2} \partial_k Q_{ij} \partial_k Q_{ij} + \frac{L_2}{2} \partial_j Q_{ij} \partial_k Q_{ik}, \quad (2)$$

$$\phi_{\text{surf}} = -\frac{2}{3} \tilde{w} \text{Tr}[\tilde{\mathbf{Q}} \cdot \mathbf{Q}_{\text{surf}}], \quad (3)$$

where a depends linearly on the temperature, b and c are positive constants, and L_1 and L_2 are positive parameters related to the elastic constants. If we will rescale all the variables as follows [26]: $\tilde{\mathbf{Q}} = 6c\mathbf{Q}/b$, the positions $\tilde{\mathbf{r}} = \mathbf{r}/\xi$, where the correlation length ξ is defined as $\xi^2 = 8c(3L_1 + 2L_2)/b^2$, and $\tilde{\mathcal{F}}_{\text{LdG}} = 24^2 c^3 \mathcal{F}_{\text{LdG}}/\xi^3 b^4$, we get $\tilde{\mathcal{F}}_{\text{LdG}} = \int_V (\tilde{\phi}_{\text{bulk}} + \tilde{\phi}_{\text{el}}) d\tilde{V} + \int_A \tilde{\phi}_{\text{surf}} d\tilde{s}$, with rescaled free-energy densities

$$\tilde{\phi}_{\text{bulk}} = \frac{2}{3} \tau \text{Tr } \tilde{\mathbf{Q}}^2 - \frac{8}{3} \text{Tr } \tilde{\mathbf{Q}}^3 + \frac{4}{9} [\text{Tr } \tilde{\mathbf{Q}}^2]^2, \quad (4)$$

$$\tilde{\phi}_{\text{el}} = \frac{1}{3 + 2\kappa} [\tilde{\partial}_k \tilde{Q}_{ij} \tilde{\partial}_k \tilde{Q}_{ij} + \kappa \tilde{\partial}_j \tilde{Q}_{ij} \tilde{\partial}_k \tilde{Q}_{ik}], \quad (5)$$

$$\tilde{\phi}_{\text{surf}} = -\frac{2}{3} \tilde{w} \text{Tr}[\tilde{\mathbf{Q}} \cdot \tilde{\mathbf{Q}}_{\text{surf}}]. \quad (6)$$

Here, $\tau = 24ac/b^2$ is a dimensionless temperature, $\kappa = L_2/L_1$ is an elastic dimensionless parameter ($\kappa > -3/2$) and $\tilde{w} = 16wc/b^2 \xi$ is the dimensionless anchoring strength. Hereafter we will consider these rescaled expressions, so we will drop the overtilde notation. For $\tau = 1$, the bulk free-energy density has two minima corresponding to $\phi_{\text{bulk}} = 0$ for rescaled scalar order parameters $S_I = 0$ (isotropic phase) and $S_N = 1$ (nematic phase), so both phases are at coexistence. It is important to note that the order parameter S in the coexisting nematic phase is rescaled, so its value in real units is $b/6c$, which must be smaller than 1 (typically ≈ 0.4). If the elastic parameter κ is positive (negative), the nematic prefers to align parallel (perpendicular) to a possible nematic-isotropic (NI) interface. Finally, \mathbf{Q}_{surf} defines the favored tensor at the substrate. We will favor a homeotropic alignment of the nematic by setting $\mathbf{Q}_{\text{surf}} = (3\boldsymbol{\nu} \otimes \boldsymbol{\nu} - 1)/2$, with $\boldsymbol{\nu}$ as the normal vector to the substrate, establishing a direct connection to previous papers [27–30]. Hereafter we will restrict ourselves to the nematic phase at the NI transition ($\tau = 1$), with $\kappa = 2$.

B. Frank-Oseen model

The FO model can be considered as an approximation to the LdG model, in which we assume that the variations of the nematic order parameter are restricted to the neighborhood of the substrate (with a width on the order of ξ) and inside defect cores, and takes the bulk value S elsewhere. Assuming that there are no disclination lines in the bulk, substitution of this *Ansatz* into the LdG free-energy functional leads to the following FO approach for large L (in units of ξ):

$$\mathcal{F} \approx \mathcal{F}_{\text{FO}} \equiv \phi_{\text{bulk}}(S) \mathcal{V} + \int_A ds \Sigma(\theta(s)) + \frac{K}{2} \int_V dV |\nabla \theta|^2, \quad (7)$$

where \mathcal{V} is the total volume of the nematic, \mathcal{A} is the substrate area in contact with the nematic, the elastic constant $K = (9/2)S^2(2 + \kappa)/(3 + 2\kappa)$ and $\Sigma(\theta)$ is an effective anchoring potential to be determined in the following that is due to the nematic order parameter distortions close to the substrates.

In order to make a quantitative comparison with the results within the LdG model, instead of considering an *ad hoc* expression for the anchoring potential, we will derive it from the LdG model. As it was mentioned above, the nematic order parameter distortions are assumed to be confined to a layer of width $\eta \sim \xi$ close to the substrates. On the other hand, the variations of the nematic director field close to the walls are rather small in directions parallel to the surfaces for large L (except close to the wedges and apexes). So, we may estimate $\Sigma(\theta)$ as the LdG excess free energy per unit area of a slab of width η , for which, at the boundary $y = 0$, we impose a surface field ϕ_{surf} , and for $y \geq \eta$ we consider a bulk nematic phase with an uniform nematic director character-

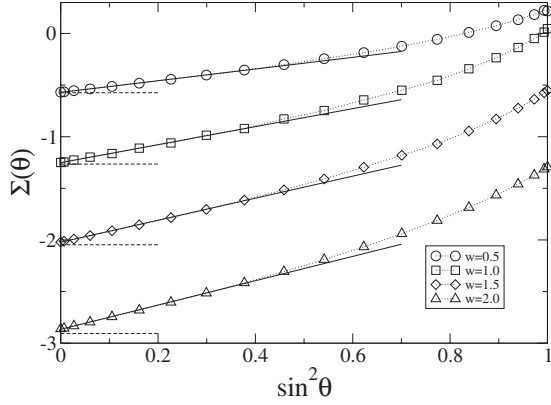


FIG. 2. Plot of the effective anchoring potential $\Sigma(\theta)$ as a function of $\sin^2 \theta$, for a layer width $\eta=1.5\xi$ and $w=0.5$ (circles), $w=1$ (squares), $w=1.5$ (diamonds), and $w=2$ (triangles). The dashed horizontal lines correspond to the values of σ_{NW} obtained from Eq. (8), and the continuous lines correspond to the fit to a Rapini-Papoular expression for small values of the tilt angle. The values of the slopes Σ_0'' are 0.565_5 ($w=0.5$), 0.872_9 ($w=1$), 1.067_8 ($w=1.5$), and 1.177_{11} ($w=2$).

ized by a tilt angle θ with respect to the y axis. Figure 2 shows $\Sigma(\theta)$ obtained by numerical minimization with a conjugate-gradient method for $\eta=1.5\xi$ (similar results are obtained for other values of η). For each value of w , the minimum value of $\Sigma(\theta)$ corresponds to the homeotropic alignment $\theta=0$, where it takes the (true) nematic-wall surface tension value $\sigma_{NW}(w)$. For not too large values of θ , $\Sigma(\theta)$ takes a Rapini-Papoular form [31] $\Sigma(\theta) \sim \sigma_{NW} + \Sigma_0''(w) \sin^2 \theta$. There are deviations for θ around $\pi/2$, but in any case the involved energies are much larger. In the range of values of w we will consider in this paper ($0 < w < 2$), both σ_{NW} and Σ_0'' are on the order of w . Indeed σ_{NW} can be obtained analytically from minimization of the LdG functional in the presence of a flat wall and for homeotropic anchoring [27,28]. In this situation the equilibrium nematic director field does not show any deformation and there is no biaxiality, so the resulting free energy at NI coexistence can be expressed in terms of the nematic order parameter profile $S=S(y)$ as $\mathcal{F}_{LdG} = \mathcal{A} \int_0^\infty [S^2 - 2S^3 + S^4 + (S')^2/2] dy - wS(0)$, where $S'(y) = dS/dy$. By introducing a magnetizationlike field $m(y) \equiv 2S(y) - 1$, the LdG functional reduces to the Landau-Ginzburg free-energy functional of an Ising model for zero applied magnetic field in the presence of a flat wall. This problem has been extensively studied in the literature [32,33], leading to a nematic order parameter profile $S(y) = [1 + g \exp(-\sqrt{2}y)]^{-1}$, where g is obtained from the boundary condition $S'(0) = -w$. The resulting expression for σ_{NW} is

$$\sigma_{NW} = \frac{\sqrt{3}(g+3)g^2}{6(1+g)^3} - \frac{w}{1+g}, \quad (8)$$

where $g = -(1 + 1/\sqrt{2}w) + \sqrt{(1 + 1/\sqrt{2}w)^2 - 1}$.

In order to obtain the azimuthal angle θ field, we have to minimize the energy functional given by Eq. (7). In the bulk,

we thus have to solve the Laplace equation $\nabla^2 \theta = 0$ with appropriate anchoring conditions at the boundaries. Let $\mathbf{v} = (-\sin \theta_0, \cos \theta_0, 0)$ now be the local normal to the substrate. Using the approximation $\Sigma(\theta) \sim \sigma_{NW} + \Sigma_0''(w) \sin^2(\theta - \theta_0)$ found previously, the nematic director field then satisfies approximately that $K\mathbf{v} \cdot \nabla \theta + \Sigma_0'' \sin[2(\theta - \theta_0)] = 0$. Note that we may assume strong homeotropic anchoring conditions when L is large compared to the extrapolation length $K/2\Sigma_0'' \sim K/w$ or, equivalently, $wL \gg 1$. We can justify this assumption by considering the following rescaling: $\mathbf{r}^* = \mathbf{r}/L$, $\theta^*(\mathbf{r}^*) = \theta(\mathbf{r})$, and $\mathcal{F}_{FO}^* = \mathcal{F}_{FO}/L$. In this rescaled description, we must minimize the FO free energy (7) in the rescaled domain subject to an effective anchoring potential $\Sigma^*(\theta^*) = L\Sigma(\theta)$. This means that the dependence on the size of the system can be absorbed into the coefficients of the anchoring potential: σ_{NW} (which does not affect the anchoring conditions) and Σ_0'' (which is rescaled by a factor of L). Strong anchoring condition is then satisfied when the rescaled extrapolation length $K/2\Sigma_0''L \ll 1$, in agreement with our previous estimate.

III. RESULTS

A. Numerical results within the LdG model

We now turn to the evaluation of the distortion contribution in the LdG model. We consider values of α between 0 and $\pi/2$, $8 \leq L \leq 96$, and $0 \leq w \leq 2$. In order to get the orientational ordering, we numerically minimize the LdG free-energy functional by using a conjugate-gradient method. The numerical discretization of the continuum problem is performed with a finite element method combined with adaptive meshing in order to resolve the different length scales that may emerge in the problem [34]. The numerical procedure is similar to that used to study the wetting transition by the nematic phase in this geometry [29]. The numerical minimization of the LdG functional \mathcal{F}_{LdG} shows that the N^\perp texture has lower free energy if $\alpha < \pi/4$ owing to lesser distortion. Conversely, the N^\parallel texture has lower free energy for $\alpha > \pi/4$. These results are in agreement with previous studies in the literature [8–11]. As a consequence, we observe bistability in a range of values of α around $\pi/4$. Figure 3 displays some typical textures. We see that on the substrates the nematic orientation is preferentially homeotropic. Inspection of these textures shows that in general there are no disclinations in bulk, except for large w and α around $\pi/4$, but there is an important distortion on the nematic director field close to the wedges and apexes. On the other hand, when disclinations are observed in bulk [see, for example, Fig. 3(b) or Fig. 3(c)], they are at a distance on the order of ξ from a wedge or apex, which is almost independent of L .

The analysis of the calculated equilibrium free energies confirms that the leading-order contribution to the equilibrium free energy per unit area is σ_{NW} , which is a further confirmation that there is strong anchoring on the substrates. As a consequence, we may obtain the elastic part of the free energy per cell (i.e., a slice parallel to the yz plane with width along the x axis equal to the substrate period) and unit length in the z direction, f_{elastic} , as $2L(\mathcal{F}_{LdG}|_{\text{eq}}/\mathcal{A} - \sigma_{NW})$. Numerical evaluation of f_{elastic} shows a clear dependence on L

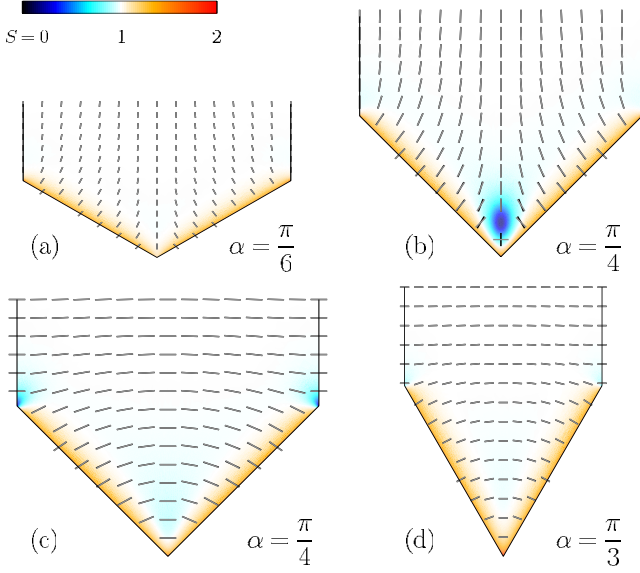


FIG. 3. (Color online) Contour maps of the nematic order parameter S [blue (dark gray) for small S , white for the bulk value $S=1$, and orange (light gray) for higher S] and the nematic director field \mathbf{n} (gray segments) for the equilibrium textures obtained from minimization of the LdG model for $L=16$ and $w=1.0$: (a) $\alpha=\pi/6$ (N^\perp), (b) $\alpha=\pi/4$ (N^\perp), (c) $\alpha=\pi/4$ (N^\parallel), and (d) $\alpha=\pi/3$ (N^\parallel). The singular nematic director field from the FO approach [Eqs. (11) and (12)] is also shown for comparison (black segments). Note that they are indistinguishable almost everywhere.

in a broad range of values of w (see Fig. 4 for $\alpha=\pi/6$ and $\alpha=\pi/3$). It is interesting to compare this result to the prediction within Berreman's approach for the elastic contribution to a smooth substrate-nematic surface free energy [15]. Although originally this approach was introduced for shallow sinusoidal substrates with strong tangential anchoring, it can be extended straightforwardly to the present case with homeotropic anchoring, either weak or strong. By using the electrostatic analogy, we may expand the azimuthal angle field θ as

$$\theta(x,y) = \sum_{n=0}^{\infty} M_n \sin(nqx) \exp(-nqy), \quad (9)$$

where q is the wave number associated with the substrate periodicity, and the coefficients M_n are chosen to satisfy the imposed boundary conditions. Substitution of this expression in the FO free energy leads to the elastic contribution to the surface free energy which depends only on Aq , with A as the roughness amplitude. For sinusoidal substrates under moderate or strong anchoring conditions, Berreman's approximation $f_{\text{elastic}} \approx \pi K(Aq)^2$ is valid if qA is smaller than 1 [21]. In any case, if A scales like L , the surface free energy should be independent of L . In order to explain and characterize the anomalous scaling for the elastic free energy obtained within the LdG framework, we will now resort to the FO approximation.

B. Results with the FO model

Disclination lines are known to nucleate on wedges and apexes [8–11]. Their presence introduces a singular contribution to the orientation field θ which cannot be expanded as in Eq. (9). We may write $\theta(x,y)$ as $\theta_s(x,y) + \theta_{\text{ns}}(x,y)$, where θ_s is the singular contribution due to the disclination lines and θ_{ns} is the nonsingular part. Note that Berreman assumed that $\theta_s \equiv 0$. The singular θ field associated with one isolated disclination line located at the origin and characterized by a winding number I takes the form $-I \arctan(x/y) = I\mathcal{J}[\ln(i\zeta)]$, where $\zeta = x+iy$ and $\mathcal{J}(\zeta)$ is the imaginary part of ζ . In the bulk, the values of the winding number I are restricted to half-integer values to avoid discontinuities in the nematic director field. For a periodic linear array of disclination lines, we may obtain the singular nematic orientation field from a conformal transformation,

$$\begin{aligned} \zeta \mapsto \zeta' &= \sin\left(\frac{q\zeta}{2}\right) \\ &= \sin\left(\frac{qx}{2}\right) \cosh\left(\frac{qy}{2}\right) + i \cos\left(\frac{qx}{2}\right) \sinh\left(\frac{qy}{2}\right), \end{aligned} \quad (10)$$

where the wave number which characterizes the substrate periodicity is $q = \pi/L \cos \alpha$. The transformation maps a neighborhood of any point $\zeta_n = n(2L \cos \alpha)$, with n as an integer, to a neighborhood of the origin in the ζ' -complex plane. If we denote $\zeta = \zeta_n + \epsilon$ ($|\epsilon|$ small), then the transformation leads to a complex number $\zeta' \approx (-1)^n q \epsilon / 2$. Thus, the orientation field $I\mathcal{J}[\ln(i\zeta')] = -I \arctan[\tan(qx/2) \coth(qy/2)]$, which is a solution to the Laplace equation, periodic in x with period $2L \cos \alpha$ and singular at each ζ_n , reduces to the field corresponding to an isolated defect of winding number I in the neighborhood of any ζ_n . Focusing on the range $x \in [-L \cos \alpha, L \cos \alpha]$, the azimuthal angle generated by this function is $\theta=0$ at $x=0$ and $x = \pm L \cos \alpha$. On the other hand, for $|qy/2| \gg 1$, $\theta \approx -\text{sgn}(y)Iqx/2$ for $x \neq \pm L \cos \alpha$, where $\text{sgn}(y) = y/|y|$ is the sign of y . Note that there is a jump from $\theta = -\text{sgn}(y)I\pi/2$ to $\theta = \text{sgn}(y)I\pi/2$ when crossing $x = L \cos \alpha$. In the bulk, this solution is acceptable if I is an

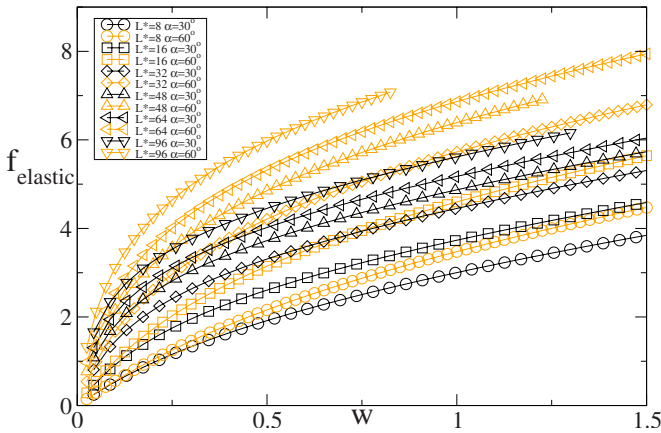


FIG. 4. (Color online) Plot of f_{elastic} as a function of the anchoring strength w for $\alpha=\pi/6$ (black symbols) and $\alpha=\pi/3$ [orange (light gray) symbols]. We considered different cell sizes: $L=8$ (circles), $L=16$ (squares), $L=32$ (diamonds), $L=48$ (up triangle), $L=64$ (left triangle), and $L=96$ (down triangle).

integer (note that the nematic state is invariant under inversion of the nematic director). If I is a half-integer, we may add to this solution the orientation field $I \arctan[\tan(qx/2)]$ due to an array of disclination lines with winding number $-I$ located at $\zeta_n - i\infty$, which in the x interval $(-L \cos \alpha, L \cos \alpha)$ reduces to $Iqx/2$. The compound orientation field $I\{-\arctan[\tan(qx/2)\coth(qy/2)] + \arctan[\tan(qx/2)]\}$ has no discontinuity at $x = \pm L \cos \alpha$ for $y > 0$ (in fact, it goes to zero as $qy/2 \gg 1$), but it jumps from $I\pi$ to $-I\pi$ when crossing $x = L \cos \alpha$ for $y < 0$. This is again physically acceptable if I is a half-integer. Finally, we must mention that there are different physically equivalent representations of the same singular field associated with a periodic array of disclination lines located at $x = \zeta_n$ as, for example, the field $I\{\arctan[\cot(qx/2)\tanh(qy/2)] - \arctan[\cot(qx/2)]\}$. This orientation field shows a physically acceptable discontinuity at $x=0$ for $y < 0$ if I is a half-integer.

When disclination lines are located on surfaces, their winding numbers I are not constrained to half-integer values [8–11], as we may tune the winding numbers in order to match the boundary conditions close to any wedge or the apex in the strong anchoring regime. Alternatively, a Schwartz-Christoffel transformation may be used [8]. For the N^\perp texture, we find that the winding numbers I_1 and I_2 for the disclination lines at the wedge bottom and at the apex top, respectively, are $I_1 = -\alpha/(\pi/2 - \alpha)$ and $I_2 = \alpha/(\pi/2 + \alpha)$. For the N^\parallel texture, the topological charges are $I_1 = 1$ and $I_2 = -(\pi/2 - \alpha)/(\pi/2 + \alpha)$. The resulting singular orientation fields, θ_s^\perp and θ_s^\parallel , can be written in terms of the wave number q and for $x \in (-L \cos \alpha, L \cos \alpha)$ as

$$\theta_s^\perp = \frac{-\alpha}{\frac{\pi}{2} - \alpha} \left[-\arctan\left(\tan\frac{qx}{2}\coth\frac{qy}{2}\right) + \arctan\left(\tan\frac{qx}{2}\right) \right] + \frac{\alpha}{\frac{\pi}{2} + \alpha} \left\{ -\arctan\left[\tan\frac{qx}{2}\tanh\frac{q(y-L\sin\alpha)}{2}\right] + \arctan\left[\tan\frac{qx}{2}\right] \right\}, \quad (11)$$

$$\theta_s^\parallel = \frac{\pi}{2} + \left[-\arctan\left(\tan\frac{qx}{2}\coth\frac{qy}{2}\right) + \arctan\left(\tan\frac{qx}{2}\right) \right] - \frac{\frac{\pi}{2} - \alpha}{\frac{\pi}{2} + \alpha} \left\{ -\arctan\left[\tan\frac{qx}{2}\tanh\frac{q(y-L\sin\alpha)}{2}\right] + \arctan\left[\tan\frac{qx}{2}\right] \right\}. \quad (12)$$

These expressions do not show any discontinuity above the substrate. We checked that these solutions approximate quite well the boundary anchoring conditions (but not exactly), so that θ_{ns} may be neglected in most of the cases. Furthermore, the agreement between our *Ansätze* for the director orientation field and the numerical LdG textures is excellent except close to the defect cores, as can be seen in Fig. 3.

The elastic energy can be obtained by standard contour integration techniques. By symmetry, f_{elastic} can be obtained

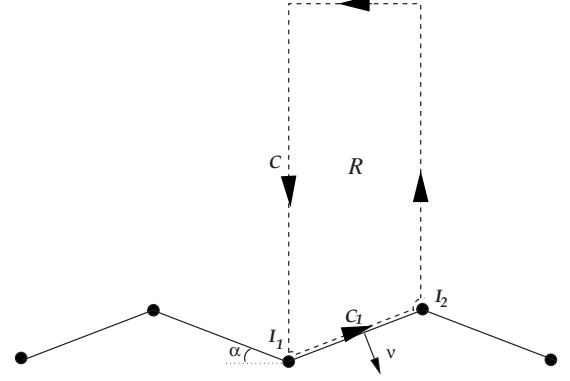


FIG. 5. Plot of the integration contour C (dashed line) to get the elastic contribution to the free energy in the region R inside the contour. The contour is deformed to avoid the cores of the disclination lines with winding numbers I_1 and I_2 at the wedge and apex (filled circles). We highlight the contour C_1 with an associated outward normal ν .

as twice the contribution of the half-cell region R (see Fig. 5). By using the identity $\nabla \cdot (\theta \nabla \theta) = |\nabla \theta|^2 + \theta \nabla^2 \theta$, and using the divergence theorem and the fact that $\nabla^2 \theta = 0$ in R , we obtain that f_{elastic} can be expressed in terms of an integral over the contour C of R ,

$$f_{\text{elastic}} = K \oint_C \theta \nu \cdot \nabla \theta ds. \quad (13)$$

Along the segments $x=0$, $x=L \cos \alpha$, and $y \rightarrow \infty$, we impose that $\theta = \theta_{\text{sing}} = \alpha_\infty$, where the far-field azimuthal angle is $\alpha_\infty = 0$ for the N^\perp texture and $\alpha_\infty = \pi/2$ for the N^\parallel texture. We link C_1 to the $x=0$ and $x=L \cos \alpha$ segments by circle arcs of small radii ϵ . These circles take into account the presence of a defect core, and their radii are proportional to the nematic coherence length, which provides a microscopic cutoff for the continuum Frank-Oseen model. In these boundaries, θ approaches, up to a constant, the field of one isolated disclination line, which satisfies the following property $\nu \perp \nabla \theta$ as $\epsilon \rightarrow 0$. So we can neglect the contribution of the circle arcs to the contour integral. Finally, $\theta = \alpha$ along the segment C_1 for strong anchoring conditions. Taking into account that $\oint_C \nu \cdot \nabla \theta ds = 0$, we may rewrite Eq. (13) as

$$f_{\text{elastic}} = K \oint_C (\theta - \alpha_\infty) \nu \cdot \nabla \theta ds = K(\alpha - \alpha_\infty) \oint_{C_1} \nu \cdot \nabla \theta ds. \quad (14)$$

If θ is split into singular and nonsingular contributions, we see that the nonsingular term, which can be expressed by Eq. (9), leads to a contribution to f_{elastic} independent of L . On the other hand, the leading-order contribution to f_{elastic} comes from the singular orientation field, namely, the contribution close to the disclination lines and apex. If s is the distance of a point of the contour C_1 close to the wedge or apex, $\nu \cdot \nabla \theta_{\text{sing}} \approx -I_1/s$ or $-I_2/s$, respectively. The leading-order contribution to f_{elastic} comes from integration on C_1 as

$$f_{\text{elastic}} \sim \mathcal{K}(\alpha) \ln L/\epsilon, \quad (15)$$

where \mathcal{K} is defined as

$$\mathcal{K}(\alpha) = K(\alpha - \alpha_\infty)(I_2 - I_1) = \begin{cases} \frac{K\pi\alpha^2}{(\frac{\pi}{2})^2 - \alpha^2}, & \alpha < \frac{\pi}{4} \\ K\pi\frac{\frac{\pi}{2} - \alpha}{\frac{\pi}{2} + \alpha}, & \alpha > \frac{\pi}{4}. \end{cases} \quad (16)$$

Expressions (15) and (16) show that the equilibrium texture is N^\perp for $\alpha < \pi/4$, and N^\parallel for larger values of α , in agreement with our LdG calculations and previous results reported in the literature [8].

C. Analysis of the results within the LdG model

Finally, in order to check the accuracy of our approximation, we analyze the results obtained with the LdG model by fitting the values of f_{elastic} obtained from minimization to an expression

$$f_{\text{elastic}} = \mathcal{K}(\alpha) \ln(L/\xi) + B(\alpha, w), \quad (17)$$

where $\mathcal{K}(\alpha)$ is given by expression (16) and $B(\alpha, w)$ is expected not to depend explicitly on L if wL is large enough (i.e., under strong anchoring conditions). The resulting curves for different values of L of $B(\alpha, w)$ as a function of w for a fixed value of α collapse into a master curve (see Fig. 6). Deviations only appear for small values of $w \leq L^{-1}$, at which the strong anchoring condition breaks down.

This result shows clearly that there is a contribution to the elastic part of the surface free energy which scales logarithmically with the periodicity of the substrate. For large L (small q) and $w \gg L^{-1}$, the surface free-energy density (i.e., per unit projected area on the xz plane) of a nematic in the presence of a sawtooth substrate has the asymptotic behavior $\sigma_{\text{NW}}/\cos \alpha - [\mathcal{K}(\alpha)/2\pi]q \ln q + \mathcal{O}(q)$. The nonanalytical contribution $-q \ln q$ introduces a slow decay of the surface free energy of the nematic with increasing L . This may help to explain the large deviations with respect to the Wenzel law observed for the wetting transition by nematic of a sawtoothed substrate in contact with the isotropic phase [29].

IV. CONCLUSIONS

In this paper we have analyzed the size dependence of the elastic contribution to the interfacial free-energy density of a

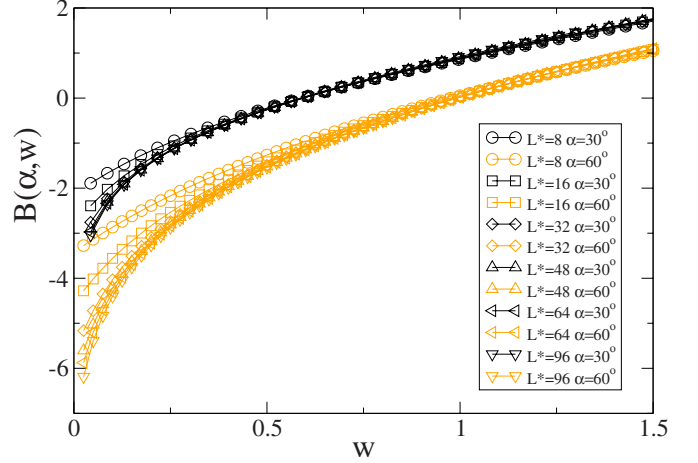


FIG. 6. (Color online) Plot of $B(w, \alpha)$ as a function of the anchoring strength w for $\alpha = \pi/6$ and $\alpha = \pi/3$. The meaning of the symbols is the same as in Fig. 4.

nematic in the presence of a sawtoothed substrate. The nucleation of non-half-integer disclination lines of the nematic director field on the apexes and wedges of the substrate, predicted in the FO model, induces a nonanalytical contribution which scales with the substrate periodicity wave number q as $-q \ln q$ for small q . This has been confirmed by the numerical results in the full LdG model. The periodicity scaling of the elastic contribution to the surface free energy is different from that obtained for smooth surfaces, which scales linearly with q . Our arguments are not specific to this kind of substrate and can be extended straightforwardly to any surface shape which shows ridges, cusps, and similar singularities. On the other hand, the size scaling of the elastic free energy has consequences for surface transitions such as wetting. Finally, the recent impressive advances in microfluidic technology and surface patterning open the possibility of an experimental verification of our predictions.

ACKNOWLEDGMENTS

The authors wish to thank Professor M. M. Telo da Gama and Professor A. O. Parry for enlightening discussions. We acknowledge the support from MICINN (Spain) through Grants No. HP2008-0028 and No. FIS2009-09326, Junta de Andalucía (Spain) through Grant No. P09-FQM-4938 (J.M.R.-E.), FCT (Portugal) through Grant No. SFRH/BPD/20325/2004 (C.-T.P.), and Acção Integrada Luso-Espanhola Ref. E 17/09 (P.P.).

- [1] M. Kléman, *Points, Lines and Walls in Liquid Crystals, Magnetic Systems, and Various Disordered Media* (Wiley, New York, 1983).
- [2] N. D. Mermin, *Rev. Mod. Phys.* **51**, 591 (1979).
- [3] M. B. Hindmarsh and T. W. B. Kibble, *Rep. Prog. Phys.* **58**, 477 (1995).
- [4] D. J. Kosterlitz and D. J. Thouless, *J. Phys. C* **6**, 1181 (1973).

- [5] D. R. Nelson, in *Phase Transitions and Critical Phenomena*, edited by C. Domb and J. L. Lebowitz (Academic, New York, 1983), Vol. 7, p. 1.
- [6] H. W. Oseen, *Trans. Faraday Soc.* **29**, 883 (1933).
- [7] F. C. Frank, *Discuss. Faraday Soc.* **25**, 19 (1958).
- [8] G. Barbero, *Lett. Nuovo Cimento Soc. Ital. Fis.* **29**, 553 (1980).

- [9] G. Barbero, *Lett. Nuovo Cimento Soc. Ital. Fis.* **32**, 60 (1981).
- [10] G. Barbero, *Lett. Nuovo Cimento Soc. Ital. Fis.* **34**, 173 (1982).
- [11] A. Poniewierski, *Eur. Phys. J. E* **31**, 169 (2010).
- [12] L. R. Evangelista and G. Barbero, *Phys. Rev. E* **50**, 2120 (1994).
- [13] F. C. Cardoso and L. R. Evangelista, *Phys. Rev. E* **53**, 4202 (1996).
- [14] P. V. Dolganov, H. T. Nguyen, E. I. Kats, V. K. Dolganov, and P. Cluzeau, *Phys. Rev. E* **75**, 031706 (2007).
- [15] D. W. Berreman, *Phys. Rev. Lett.* **28**, 1683 (1972).
- [16] P.-G. de Gennes and J. Prost, *The Physics of Liquid Crystals*, 2nd ed. (Clarendon Press, Oxford, 1995).
- [17] C. V. Brown, M. J. Towler, V. C. Hui, and G. P. Bryan-Brown, *Liq. Cryst.* **27**, 233 (2000).
- [18] S. Kitson and A. Geisow, *Appl. Phys. Lett.* **80**, 3635 (2002).
- [19] J. I. Fukuda, M. Yoneya, and H. Yokoyama, *Phys. Rev. Lett.* **98**, 187803 (2007).
- [20] L. Harnau, S. Kondrat, and A. Poniewierski, *Phys. Rev. E* **76**, 051701 (2007).
- [21] G. Barbero, A. S. Gliozzi, M. Scalerandi, and L. R. Evangelista, *Phys. Rev. E* **77**, 051703 (2008).
- [22] Y. Yi, G. Lombardo, N. Ashby, R. Barberi, J. E. MacLennan, and N. A. Clark, *Phys. Rev. E* **79**, 041701 (2009).
- [23] C. Uche, S. J. Elston, and L. A. Parry-Jones, *J. Phys. D: Appl. Phys.* **38**, 2283 (2005).
- [24] C. Uche, S. J. Elston, and L. A. Parry-Jones, *Liq. Cryst.* **33**, 697 (2006).
- [25] P. Patrício, M. M. Telo da Gama, and S. Dietrich, *Phys. Rev. Lett.* **88**, 245502 (2002).
- [26] D. Andrienko, M. Tasinkevych, P. Patricio, and M. M. Telo da Gama, *Phys. Rev. E* **69**, 021706 (2004).
- [27] P. Sheng, *Phys. Rev. Lett.* **37**, 1059 (1976).
- [28] P. Sheng, *Phys. Rev. A* **26**, 1610 (1982).
- [29] P. Patrício, C.-T. Pham, and J. Romero-Enrique, *Eur. Phys. J. E* **26**, 97 (2008).
- [30] F. N. Braun, T. J. Sluckin, and E. Velasco, *J. Phys.: Condens. Matter* **8**, 2741 (1996).
- [31] A. Rapini and M. Papoular, *J. Phys. (Paris), Colloq.* **30**, C4 (1969).
- [32] K. Binder and P. Hohenberg, *Phys. Rev. B* **6**, 3461 (1972).
- [33] J. W. Cahn, *J. Chem. Phys.* **66**, 3667 (1977).
- [34] P. Patrício, M. Tasinkevych, and M. M. Telo da Gama, *Eur. Phys. J. E* **7**, 117 (2002).