



HAL
open science

Homochiral vs. heterochiral preference in chiral self-recognition of cyclic diols

Jennifer Dupont, Beppo Hartwig, Katia Le Barbu-Debus, Valéria Lepère, Regis Guillot, Martin A Suhm, Anne Zehnacker

► **To cite this version:**

Jennifer Dupont, Beppo Hartwig, Katia Le Barbu-Debus, Valéria Lepère, Regis Guillot, et al.. Homochiral vs. heterochiral preference in chiral self-recognition of cyclic diols. *Physical Chemistry Chemical Physics*, 2024, <10.1039/d4cp00351a>. <hal-04504045>

HAL Id: hal-04504045

<https://universite-paris-saclay.hal.science/hal-04504045v1>

Submitted on 14 Mar 2024

HAL is a multi-disciplinary open access archive for the deposit and dissemination of scientific research documents, whether they are published or not. The documents may come from teaching and research institutions in France or abroad, or from public or private research centers.

L'archive ouverte pluridisciplinaire **HAL**, est destinée au dépôt et à la diffusion de documents scientifiques de niveau recherche, publiés ou non, émanant des établissements d'enseignement et de recherche français ou étrangers, des laboratoires publics ou privés.



HAL Authorization

PCCCP

Physical Chemistry Chemical Physics

Accepted Manuscript

This article can be cited before page numbers have been issued, to do this please use: J. Dupont, B. Hartwig, K. Le Barbu-Debus, V. Lepere, R. Guillot, M. A. Suhm and A. Zehnacker, *Phys. Chem. Chem. Phys.*, 2024, DOI: 10.1039/D4CP00351A.



This is an Accepted Manuscript, which has been through the Royal Society of Chemistry peer review process and has been accepted for publication.

Accepted Manuscripts are published online shortly after acceptance, before technical editing, formatting and proof reading. Using this free service, authors can make their results available to the community, in citable form, before we publish the edited article. We will replace this Accepted Manuscript with the edited and formatted Advance Article as soon as it is available.

You can find more information about Accepted Manuscripts in the [Information for Authors](#).

Please note that technical editing may introduce minor changes to the text and/or graphics, which may alter content. The journal's standard [Terms & Conditions](#) and the [Ethical guidelines](#) still apply. In no event shall the Royal Society of Chemistry be held responsible for any errors or omissions in this Accepted Manuscript or any consequences arising from the use of any information it contains.

Homochiral vs. heterochiral preference in chiral self-recognition of cyclic diols

View Article Online
DOI: 10.1039/C4CP00351A

Jennifer Dupont,^{a)} Beppo Hartwig,^{b)} Katia Le Barbu-Debus,^{a)} Valéria Lepère,^{a)} Regis Guillot,^{c)} Martin A. Suhm,^{b)} Anne Zehnacker^{a)*}

a) Institut des Sciences Moléculaires d'Orsay (ISMO), CNRS, rue André Rivière, Université Paris-Saclay, F-91405 Orsay, France

b) Institut für Physikalische Chemie, Georg-August-Universität Göttingen, Tammannstr. 6, 37077 Göttingen, Germany.

c) Institut de Chimie Moléculaire et des Matériaux d'Orsay (ICMMO), 17 Av. des Sciences Université Paris-Saclay, F-91405 Orsay, France

*e-mail: anne.zehnacker-rentien@universite-paris-saclay.fr

Abstract

The structure and clustering propensity of a chiral derivative of *cis*-1,2-cyclohexanediol, namely, 1-phenyl-*cis*-1,2-cyclohexanediol (*cis*-PCD), has been studied under supersonic expansion conditions by combining laser spectroscopy with quantum chemistry calculations. The presence of the phenyl substituent induces conformational locking relative to *cis*-1,2-cyclohexanediol (*cis*-CD), and only one conformer of the bare molecule is observed by both Raman and IR-UV double resonance spectroscopy. The homochiral preference inferred for the dimer formation at low enough temperature is in line with the formation of a conglomerate in the solid state. The change in clustering propensity in *cis*-PCD relative to *trans*-1,2-cyclohexanediol (*trans*-CD), which shows heterochiral preference, is explained by the presence of the phenyl substituent rather than the effect of *cis-trans* isomerism. Indeed the transiently chiral *cis*-CD also forms preferentially heterodimers, whose structure is very close to that of the corresponding *trans*-CD dimer.



Introduction

View Article Online
DOI: 10.1039/D4CP00351A

Life is characterised by a strong homochiral preference: all the proteogenic amino acids are of identical absolute configuration, and so are all the sugars, and the reason for the initial dissymmetry between the two enantiomers is still under debate.¹⁻³ It is commonly admitted that non-covalent interactions play a major role in shaping the homochirality of biomolecules. For example the helical structure of an all-L polyalanine peptide is disrupted by the mere presence of a D residue.⁴ The solid state of chiral molecules contrasts with biomolecules as most of the racemic mixtures crystallise in the form of racemates, in which the unit cell contains both enantiomers that are intimately mixed.⁵ Racemic mixtures that crystallise as conglomerate are scarcer. They are estimated to form about 5-10% of the total racemic crystals, although DFT-based calculations suggest that thermodynamic conglomerate abundance should actually reach 20% or more.^{6,7} In these conglomerates, separate crystals of the two enantiomers are formed, which can be further manually separated. An example of such conglomerates are the tartrate salts at the basis of the discovery of chirality by Pasteur.⁸ Several attempts have been reported to assess the homochiral or heterochiral preference in molecular pairs isolated in the gas phase.^{9,10} The gas-phase dimer structure often differs from that observed in the solid, because the isolated dimer tries to optimise the number of hydrogen bonds. In particular, alcohols or substituted alcohols have been the subjects of many studies, for example the 1-indanol¹¹ or fluoroethanol dimer.¹² Bifunctional compounds are especially interesting in this respect as they provide more anchoring points that are expected to favour chiral discrimination.¹³ Examples include systems with permanent chirality like the methyl-lactate¹⁴⁻¹⁶ or the protonated 1-amino-2-indanol dimers¹⁷ or systems showing transient chirality like vicinal diols or aminoalcohols. In the latter systems, the two enantiomers are interconverted by torsion around a CC bond. Tunnelling between the two enantiomers manifests itself by the splitting of the transitions observed in microwave spectroscopy.¹⁸ The torsion can be blocked by dimer formation, which allows observing both homochiral and heterochiral dimers, with a preference for heterochiral pairing in the case of the 1,2-ethanediol dimer, whose preferred structure is achiral with S_4 symmetry.¹⁹ In contrast, the aminoethanol dimer shows homochiral preference.²⁰ Trends for homochiral aggregation are also observed for transiently chiral substituted alcohols such as the trifluoroethanol dimer or large clusters of phenyl-methanol, up to the tetramer.^{21,22}

Information has been gained recently on the chiral preference in the jet-cooled dimer of 1,2-ethanediol, by comparison with one of its cyclohexane analogues, the permanently chiral *trans*-1,2-cyclohexanediol (*trans*-CD).²³ *trans*-CD shows heterochiral pairing preference in the gas phase due to the formation of a strongly bound dimer optimising the number of hydrogen bonds. The isolated 1,2-ethanediol dimers form the same hydrogen-bond pattern, hence the same heterochiral preference in the gas phase. Heterochiral preference is also observed in the *trans*-CD solid, which is a racemate.²⁴

In contrast to *trans*-CD, *cis*-1,2-cyclohexanediol (*cis*-CD) is only transiently chiral because of the plane of symmetry that intersects the C_1C_2 bond when the carbon skeleton is made planar.



Moreover, the *cis* geometry of the substituents will influence the strength of the intramolecular hydrogen bond relative to *trans*-1,2-cyclohexanediol. *trans* CD is energetically favoured by 1.9 kJ mol⁻¹ in terms of zero-point-corrected energy at the B3LYP-D3(BJ,abc)/ma-def2-TZVP level of theory. Adding a phenyl substituent results in 1-phenyl-*cis*-1,2-cyclohexanediol (*cis*-PCD) that is permanently chiral. Dimer formation and chiral preference are expected to differ between *trans*-CD, *cis*-CD and *cis*-PCD, and may be influenced by the competition between intra- and intermolecular hydrogen bonds formation.^{12, 25} On the other hand, the aromatic π -system adds both steric hindrance and dispersion interactions in *cis*-PCD and acts as an efficient hydrogen bond acceptor.²⁶ These factors result in a wealth of expected hydrogen bond patterns in the aromatic dimer.

Here, we report the spectroscopic properties of *cis*-PCD and its dimers under supersonic expansion conditions, as studied by resonance-enhanced multi-photon ionisation (REMPI), Raman scattering, and conformer specific vibrational spectroscopy. The vibrational spectra of the homochiral and heterochiral dimers obtained by double resonance IR-UV spectroscopy are interpreted with the help of density functional theory (DFT) calculations to shed light on the diastereomeric preference in *cis*-PCD. The interaction patterns observed in the gas phase are compared to those existing in the solid. The structures found thereby are compared to the non-aromatic systems *cis*- and *trans*-CD.

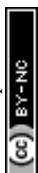
Experimental and theoretical methods

1. Experimental methods

cis-PCD (99%) was purchased from Santa Cruz Biotechnology (USA). *cis*-CD (99%) was bought from Sigma Aldrich. Both samples were used without further purification.

The Raman spectroscopy results were obtained using a slit jet at the Institut für Physikalische Chemie. In the following, we will give a description of the measurement conditions for *cis*-PCD. When conditions differ between *cis*-PCD and *cis*-CD, the values for the latter will be given in parentheses. Pure He was used as a carrier gas and continuously expanded at a stagnation pressure of 0.4 bar (1.4 bar for *cis*-CD) into low vacuum (\sim a few 10⁻¹ mbar). Raman scattering was obtained from a 532 nm cw laser operated at 24 W, with the expansion being irradiated orthogonally 1 mm (1.25 mm for *cis*-CD) downstream of the nozzle. The scattered light was collected by a photo lens perpendicular to the laser, focussed towards a Czerny-Turner-monochromator and detected by a LN2 cooled CCD camera. An exposure time of 4 min was used with 18 such exposures being averaged (5 for *cis*-CD) to yield the experimental spectrum. The spectrum was calibrated using Ne lines. The vapour pressure of the diol was enhanced in a heatable saturator kept at 395 K (365 K for *cis*-CD) with the following tubing and nozzle being heated to 425 K (395 K for *cis*-CD) to avoid condensation.²⁷

The electronic and vibrational spectroscopy results for *cis*-PCD were obtained using a pinhole jet at ISMO. The pulsed supersonic beam was produced by expanding 2 bar of helium seeded with the enantiopure or racemic *cis*-PCD into high vacuum (\sim 10⁻⁶ mbar) through a 200 μ m pulsed nozzle (General Valve - Parker).²⁸ *cis*-PCD was put in an oven just prior the expansion



and heated at 365 K for the study of the monomer and 400 K for that of the dimer. Mass-resolved electronic spectra were obtained using one-colour resonance-enhanced two-photon ionisation (RE2PI). The UV source (0.02 cm⁻¹ resolution) was generated by doubling the output of a dye laser (Sirah equipped with C540A dye) pumped by the second harmonic of a Nd:YAG laser (Quanta Ray, Spectra Physics). The UV laser beam was mildly focused by a 1 m focal length lens and crossed the skimmed supersonic beam (skimmer of 500 μm diameter) in the interaction zone of a linear time-of-flight (TOF) mass spectrometer (Jordan, one-meter length). The ion signal was detected by a microchannel plate detector (RM Jordan, 25 mm diameter), averaged by an oscilloscope (Lecroy wavesurfer), and processed through a personal computer.

Vibrational spectra were recorded using the IR-UV double resonance method.^{29, 30} A slightly focused (0.5 m focal length lens) IR laser beam (OPO/OPA - Laser Vision - 3 cm⁻¹ resolution) was counter-propagated relative to the UV laser beam and superimposed to it in the source region. After fixing the UV probe laser on selected vibronic transitions of the electronic spectrum, the wavelength of the IR pump laser was scanned in the 3 μm region. The IR absorption was then detected as a depletion of the UV-induced ion signal. The IR pulse was triggered ~80 ns before the UV pulse to record ground-state vibrational spectra. Synchronisation between the lasers was controlled by a homemade gate generator. The IR spectra were recorded resorting to an active baseline scheme, by measuring the difference in ion signal produced by successive UV laser pulses (one without and one with the IR laser pulse present).³¹

X-ray diffraction data for compound *cis*-PCD were collected following the protocol described in the Electronic Supplementary Information (ESI).

2) Theoretical methods

The potential energy surfaces (PES) of the *cis*-PCD monomer, its dimers, and those of *cis*-CD were first explored using the OPLS-2005 force fields with the advanced conformational search implemented in the MacroModel suite, a part of the Schrödinger package.³² Geometry optimization of the structures found thereby with energy below 21 kJ mol⁻¹ and vibrational frequencies calculation were performed using the B3LYP functional combined to the 6-311++G(d,p) basis set,³³ and including D3BJ dispersion corrections.^{34, 35} The minimum energy monomers resulting from the PES exploration yield the structures that were observed experimentally (*vide infra*). Because the structure of the dimers results from a competition between inter- and intra-molecular hydrogen bonds, their formation depends on multiple factors including crossing energy barriers. For this reason, we also included additional dimer structures that would be above 21 kJ mol⁻¹ in the exploration or missed with the force field used for example hydrogen bond patterns observed in similar systems like *trans*-CD. These structures were optimised in the same manner. The vibrational spectra were simulated in the frame of the double harmonic approximation at the same level of theory and the absence of imaginary frequencies was checked for all minima found. The harmonic frequencies were



scaled by 0.952 to correct for anharmonicity, functional deficiencies and basis set incompleteness.^{36, 37}

View Article Online
DOI: 10.1039/D4CP00351A

The relative stability of the different conformers was assessed by comparing their relative zero-point-corrected energies ΔE_0 and their standard Gibbs free energies ΔG (we suppress the standard sign because only differences are relevant in the present work) relative to the most stable conformation at 300 K. Comparison between ΔE_0 and ΔG is especially relevant for dimers, because they are formed at a temperature somewhere between that of the nozzle and the temperature where the expansion is probed. The difference between ΔE_0 and ΔG may be viewed as a rough estimate of the uncertainty in the predicted energy ranking. The deformation energy was calculated as the difference in energy between the structure of the monomer in the complex and that of its most stable form.^{25, 38, 39} The deformation energy mentioned in what follows is the sum of that of the two monomers.

The nature of the first two electronic excited states and the vertical transition energies were calculated at the TD-DFT level at the same level as the ground state, using 4 excited states. The difference in electronic densities was calculated from the cube files generated by the Gaussian software and using the “cubman” facility. The resulting densities were plotted using the VMD software with an isovalue of 0.001. All these calculations were performed with the Gaussian Package (Version 16 Rev. B.01).⁴⁰

For the sake of comparison with previously published work and sensitivity analysis with respect to small computational details like three-body-inclusive dispersion correction and basis set variants, the energies and harmonic frequencies were also calculated at the B3LYP-D3(BJ,abc)/ma-def2-TZVP^{41, 42} level using the ORCA (version 5.0.3) program package.⁴³ The theoretical spectra were simulated using the harmonic frequencies scaled by 0.963. Furthermore, a recently proposed empirical model⁴⁵ was applied to the *cis*-PCD monomer to account for density functional deficiencies and the missing anharmonicity. Specifically, a correction of -146.0 cm^{-1} was used to account for the degree of substitution at the 1,2-diol subunit as well as an additional correction of -8 cm^{-1} due to the phenyl group. In the case of the PCD dimers, for which highly anharmonic low-frequency modes are expected, the Gibbs energy calculations were also conducted using the Quasi Rigid Rotor Harmonic Oscillator (QRRHO) approximation developed by Grimme,⁴⁴ as a second measure for the uncertainty involved in such calculations. The results and discussion that follow are based on the B3LYP-D3(BJ,abc)/ma-def2-TZVP calculations, unless specified otherwise. The B3LYP-D3BJ/6-311++G(d,p) results are given in the ESI as well as the comparison with QRRHO.

Results and discussion

The molecule under multi-experimental study, *cis*-1-phenylcyclohexane-1,2-diol, as well as *trans*-1,2-cyclohexanediol and *cis*-1,2-cyclohexanediol are shown in Figure 1.

1) *cis*-PCD Monomer



a) Experimental spectra

View Article Online
DOI: 10.1039/D4CP00351A

The Raman spectrum shows two bands, both being down-shifted relative to a free $\nu(\text{OH})$, at 3574.0 and 3611.5 cm^{-1} (Figure 2a). These frequencies are typical of OH groups involved in a weak intramolecular OH...O and an OH... π interaction, as confirmed by the calculations described below. These results indicate that a single conformer of *cis*-PCD is observed under slit jet conditions.

Figure 3 shows the $S_1 \leftarrow S_0$ spectrum of the *cis*-PCD monomer. The strong transition origin at 37766 cm^{-1} is followed by a progression built on a low-frequency mode of 28 cm^{-1} . The same progression appears in combination with the Herzberg-Teller allowed mode at +528 cm^{-1} .

IR-UV double resonance spectra have been recorded by setting the UV probe on all the transitions marked by * in Figure 3; that obtained by probing the transition origin is displayed in Figure 2b. They are identical whatever the probe wavelength, showing unambiguously that only one conformer exists under pinhole jet conditions too. The spectrum shows two bands, both being down-shifted relative to a free $\nu(\text{OH})$, at 3575 and 3613 cm^{-1} , very close to the Raman spectroscopy values (Figure 2a).

b) Calculated results

The structure of the monomer depends on the conformation of the cyclohexane ring and that of the hydroxyl substituents. The monomers having the cyclohexane ring in a boat structure are much higher in energy ($> 25 \text{ kJ mol}^{-1}$) than those with a chair structure and will not be discussed further. Similarly, the monomers having the phenyl substituent in axial position are destabilized ($> 13 \text{ kJ mol}^{-1}$) relative to those with the phenyl in equatorial position.

We are thus left with the three structures shown in Figure 4, together with their energetics (Gibbs energy ΔG and ZPE-corrected energy ΔE_0). Their energetics are summarised in Table S1 of the ESI. They all show the phenyl and the O_2H in equatorial position, and the O_1H in axial position. They all involve a sterically constrained OH...O intramolecular interaction. We shall discuss their energetics in terms of relative Gibbs energies and ZPE-corrected energy ΔE_0 at the B3LYP-D3(BJ,abc)/ma-def2-TZVP level. The energetics (relative Gibbs energy ΔG and ZPE-corrected energy ΔE_0) and geometrical parameters at the B3LYP-D3BJ/6-311G++(d,p) level are listed in Table S2 of the ESI. These structures will be called M (like monomer) with the index 1 or 2 when the OH on the carbon atom 1 or 2 is acting as a hydrogen bond donor, respectively. Both M_1 and M_1' show an $\text{O}_1\text{H}\dots\text{O}_2$ interaction. They only differ by a rotation of O_2H that allows a weak $\text{O}_2\text{H}\dots\pi$ interaction to take place in M_1 and not in M_1' . M_1 is thus stabilised by 6.7 kJ mol^{-1} relative to M_1' , in terms of ΔG . This value can be taken as an estimation of the OH... π interaction energy. M_2 shows a hydrogen bond in the opposite direction, namely, an $\text{O}_2\text{H}\dots\text{O}_1$ interaction and is much less stable than M_1 because no OH... π interaction is possible in M_2 due to steric reasons. Notwithstanding the difference in hydrogen bond directions, the backbones are very similar in M_1' and M_2 . The Gibbs energy of M_2 relative to M_1 is 9.6 kJ mol^{-1} , which allows roughly assessing the difference between $\text{O}_2\text{H}\dots\text{O}_1$ and $\text{O}_1\text{H}\dots\text{O}_2$ interactions to $\sim 3 \text{ kJ mol}^{-1}$. The energy barrier for converting M_1' to M_1 is calculated at 2.5 kJ mol^{-1} and is overcome in our experimental conditions,⁴⁵ therefore only M_1 is expected to be observed. The energy



ranking is the same if one considers ΔE_0 or the values obtained at the B3LYP-D3BJ/6-311G++(d,p) level (see Tables S1 and S2), the values obtained with the various approaches differing by less than 10%.

The splitting of the calculated frequencies of M_1 matches well the experimental one, whatever the method used. The empirical scaling model developed for diols also predicts the absolute wavenumbers very well, although *cis*-PCD was not part of the training set.⁴⁶ $\nu(O_1H)$ (3574.0 for the Raman and 3575 for the IR-UV results) is much lower than its counterpart in the related structure of *cis*-CD (3648 cm^{-1}),⁴⁶ as expected from the presence of an $O_1H\cdots\pi$ interaction. Moreover, also $\nu(O_2H)$ (3611.5 for the Raman and 3613 for the IR-UV results) is lower in frequency, which points towards a cooperative effect between the two hydrogen bonds, as observed also for intermolecular hydrogen bonds.^{47 26 48} The intramolecular hydrogen bond is hindered and far from linearity ($\theta(O_1HO_2) = 115^\circ$ and $d(O_1H\cdots O_2) = 2.22 \text{ \AA}$ in M_1), which explains the limited downshift of $\nu(O_1H)$ compared to intermolecular $OH\cdots O$ interactions.

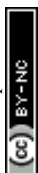
c) Comparison with *cis*- and *trans*-1,2-cyclohexanediol

The unique structure observed here contrasts with the unsubstituted *cis* cyclohexane-1,2-diol, which shows three populated conformers below 10 kJ mol^{-1} as evidenced by Raman spectroscopy, c6-6, c6-6', and c6-6a in reference,⁴⁶ here renamed C_1' , C_1 , C_2 by analogy and for a better comparison. C_1' is the dominant form and corresponds to M_1' in *cis*-PCD. Although the experimentally observed conformers C_1 , C_1' , and C_2 of *cis*-CD are similar to M_1 , M_1' , M_2 of *cis*-PCD, respectively, the energetic ordering is different. The stability of the first two conformers is inverted due to the possibility of an $OH\cdots\pi$ interaction in M_1 and not in M_1' , which does not intervene in *cis*-CD.⁴⁶ The Gibbs energy difference between the two most stable conformers of *cis*-PCD is large (6.7 kJ mol^{-1}), as is ΔE_0 (7.2 kJ mol^{-1}), due to the $OH\cdots\pi$ hydrogen bond. This, in addition to the small interconversion barrier (2.5 kJ mol^{-1}), explains that only M_1 is observed in *cis*-PCD. In both *cis*-CD and *cis*-PCD, one of the hydroxyl substituents is in equatorial and the other one in axial position. In *cis*-PCD, the equatorial position of the bulky phenyl substituent is favoured to decrease the 1-3 diaxial interactions, and the most stable structure has its O_2H group in equatorial and its O_1H in axial position, with an $\widehat{O_1HO_2}$ angle of 115° .

cis/trans isomerism also influences the diol structure. The two OH substituents are in equatorial position in *trans*-CD, hence equivalent. Two monomers with a different orientation of the accepting OH are calculated, corresponding to an $\widehat{O_1O_2H}$ angle of 145° and 110° , respectively (M and M' in reference,²³ here renamed T' and T for better distinction and analogy), akin to M_1' and M_1 in *cis*-PCD, notwithstanding the axial or equatorial position. In the absence of other interactions, T and T' are almost isoenergetic. They differ in energy by about 1 kJ mol^{-1} and their interconversion barrier is of the order of 4 kJ mol^{-1} . The two of them are therefore observed under slit jet conditions.²³

2) Dimers

a) Electronic spectroscopy of the *cis*-PCD dimer



Due to the low vapour pressure of *cis*-PCD, slit-jet Raman experiments were out of reach for its dimer. The electronic spectrum of the *cis*-PCD dimer, using either an enantiopure or a racemic mixture, is shown in Figure 5. Two transitions, namely, $S_1 \leftarrow S_0$ and $S_2 \leftarrow S_0$ located on each of the subunits, are expected in this energy range. The $S_1 \leftarrow S_0$ origin (37441 cm^{-1}) of the homochiral dimer is downshifted in energy relative to that of the monomer by 325 cm^{-1} , a value slightly larger than that observed for other aromatic dimers like the anisole dimer ($\sim 240 \text{ cm}^{-1}$) or the 1-indanol dimer ($\sim 250 \text{ cm}^{-1}$).^{11, 49} The intense transition origin is followed by low-frequency modes located at 15, 22, 42, 56 cm^{-1} . An intense band also appears at 237 cm^{-1} from the $S_1 \leftarrow S_0$ origin, *i.e.* -88 cm^{-1} from the monomer origin. It probably corresponds to the $S_2 \leftarrow S_0$ origin. Interestingly, only a weak combination band involving the 22 cm^{-1} mode is observed, pointing towards different Franck Condon activity for the $S_1 \leftarrow S_0$ and $S_2 \leftarrow S_0$ transitions. The other bands observed in the spectrum correspond to the Herzberg-Teller allowed mode of the benzene ring in S_1 (528 cm^{-1} from the $S_1 \leftarrow S_0$ origin) or S_2 (528 cm^{-1} from the $S_2 \leftarrow S_0$ origin). The strong decrease in band intensity at higher energy points towards the onset of non-radiative processes, which were not apparent in the monomer.

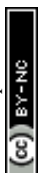
The spectrum of racemic *cis*-PCD clearly shows additional bands, which are due to the heterochiral dimer. The downshift of the $S_1 \leftarrow S_0$ transition origin of the heterochiral dimer (37511 cm^{-1}) is smaller (255 cm^{-1} from the monomer origin). A low-frequency pattern similar to that of the homochiral dimer is observed near the $S_1 \leftarrow S_0$ origin, with bands at 18, 45, 57 cm^{-1} from the $S_1 \leftarrow S_0$ origin. An additional weak band appears at 70 cm^{-1} . The band tentatively assigned to the $S_2 \leftarrow S_0$ origin, located at 145 cm^{-1} from the $S_1 \leftarrow S_0$ origin, also shows a larger down shift relative to the monomer than the homochiral dimer (110 cm^{-1}). The same decrease in band intensity at higher energy is observed as for the homochiral dimer. Still, an intense band is observed at $+257 \text{ cm}^{-1}$ of the $S_1 \leftarrow S_0$ origin, a point to which we shall come back later.

b) Vibrational spectroscopy of the *cis*-PCD dimer

IR-UV spectra have been recorded setting the probe on the bands marked by an asterisk in the REMPI spectra shown in Figure 5. They are displayed in Figure 6. The spectrum of the homochiral dimer is identical whatever the band probed (Figure 6a). It shows four transitions, as expected from the number of $\nu(\text{OH})$ oscillators, all characteristic of bound OH groups. A congested doublet at $3554/3563 \text{ cm}^{-1}$ suggests the existence of two weak hydrogen bonds. Two strongly shifted transitions, at 3344 and 3467 cm^{-1} are the signature of strong intermolecular hydrogen bonds.

The most stable calculated homochiral structure (Figure 7a) meets these requirements. The other calculated structures are shown in Figure S1 of the ESI, together with their 6-311G++(d,p) energetics. Their interactive 3-D structures are given in the supplementary structures file. Their energetic data calculated at the B3LYP-D3(BJ,abc)/ma-def2-TZVP level are listed in Table S1. The simulated spectra are shown in Figure S2.

The most stable homochiral structure is built from the most stable monomers M_1 and is what we shall call an "insertion" complex. The O_2H group of one of the monomers, called "guest" in what follows and denoted by the subscript "g", inserts into the intramolecular hydrogen bond of the other monomer, called "host" and denoted by "h". The intramolecular $\text{O}_{1g}\text{H}\dots\text{O}_{2g}$



hydrogen bond of the guest is retained while its $O_{2g}H...π$ contact is disrupted to the benefit of the strong intermolecular $O_{2g}H...O_{2h}$ interaction. The dangling $O_{2h}H$ interacts with the aromatic ring of the guest. The intramolecular $O_{1h}H...O_{2h}$ hydrogen bond of the host is disrupted to the benefit of two strong intermolecular $O_{2g}H...O_{2h}$ and $O_{1h}H...O_{2g}$ interactions. The intramolecular hydrogen bond of the guest is hardly modified relative to the M_1 monomer ($\theta(O_{1g}HO_{2g})=116^\circ$ and $d(O_{1g}...HO_{2g})=2.19 \text{ \AA}$ vs. 115° and 2.22 \AA). In contrast, the host undergoes strong deformation, which explains the large deformation energy (10.4 kJ mol^{-1}). The experimental spectrum is readily assigned on the basis of this geometry (Figures 6a and 6d). The bands observed at 3344 and 3467 cm^{-1} are assigned to the $\nu(O_{1h}H)$ and $\nu(O_{2g}H)$, respectively. The doublet at $3554/3563 \text{ cm}^{-1}$ is assigned to $\nu(O_{2h}H)$ and $\nu(O_{1g}H)$, respectively.

More conformational diversity is observed for the heterochiral dimer and a different vibrational spectrum is obtained for the probe set on the transition located at 257 cm^{-1} of the $S_1 \leftarrow S_0$ transition origin or for the probe set on the $S_1 \leftarrow S_0$ transition origin or any of the other bands. The spectrum with the probe set on the $S_1 \leftarrow S_0$ origin (Figure 6c) shows four transitions, at 3380 , 3516 , 3555 and 3563 cm^{-1} . It is attributed to the most stable (at 0 K) calculated structure (Figure 7b), which is very similar to the homochiral dimer described above. A similar insertion structure is calculated with similar hydrogen bonds, with a deformation energy of the same order as the corresponding homochiral complex. The spectrum simulated for this structure is in excellent agreement with the experimental findings (Figures 6c and 6d). The assignments of the bands at 3380 and 3516 cm^{-1} or the doublet at $3555/3563 \text{ cm}^{-1}$ parallel that of the homochiral dimer.

The spectrum obtained when probing the band at $+257 \text{ cm}^{-1}$ (band marked with \otimes in Figure 5) shows a different pattern, with a smaller down-shift of the $\nu(OH)$ frequencies. Four bands appear at 3428 , 3513 , 3542 , 3603 cm^{-1} . Based on agreement between simulated and experimental frequencies, it is assigned to an addition complex (linear structure), which is high in energy at 0 K but predicted to become competitive at higher temperature (see Figure 8 and Table S1). The other calculated heterochiral structures are shown in Figure S2 of the ESI, together with their 6-311G++(d,p) energetics. Their interactive 3-D structures are given in the supplementary structures file. The addition complex is built from a M_1 monomer acting as a donor, which adds to a M_1 monomer *via* a strong intermolecular hydrogen bond. The donor and the acceptor will be denoted by the subscript "d" or "a", respectively. They both keep their intramolecular hydrogen bond $O_1H...O_2$ intact. Because the geometry of the monomer within the complex is very close to that of the bare monomers (no disruption of the intramolecular hydrogen bonds), the deformation energy is very low (3.3 kJ mol^{-1}). The dangling $O_{2d}H$ of the donor is involved in a strong intermolecular $O_{2d}H...O_{1a}$ hydrogen bond while that of the acceptor is involved in the same $OH...π$ interaction as the monomer. There is a rather large uncertainty in energy ranking as the addition dimer is less stable by 8.0 kJ mol^{-1} in terms of ΔE_0 but more stable by 3.7 kJ mol^{-1} than the insertion heterodimer in terms of Gibbs energy at 300 K . This uncertainty mainly arises from the fact that the insertion complexes are tighter than addition complexes; the evolution of the Gibbs free energy as a function of the temperature is in favour of the latter as one can already see from the large



discrepancy between ΔG and ΔE_0 provided in Figure 7. The temperature at which the complexes are formed in the out-of-equilibrium supersonic expansion is not known but the fact that we see both heterochiral complexes, the insertion one being dominant, seems to indicate that the temperature at which the complexes are formed is higher than 0 K (see Figure 8). As expected for rigid complexes, the insertion and double insertion dimers show little variation of their relative ΔG as a function of the temperature. This contrasts to the addition complexes, in particular the heterochiral addition $O_2H_2 \rightarrow O_1 (M_1+M_1)$ dimer to which one of the experimentally observed spectra is assigned. The observation of this dimer provides an indirect measurement of the jet conformational temperature, which can be estimated at similar values using different basis set; a switch from ma-def2-TZVP to 6-311G++(d,p) would suggest a slightly different conformational temperature (175 K vs. 150 K). However, one should not overestimate the robustness of this estimate, as a different way of dealing with the entropy of very low frequency vibrations⁴⁴ would suggest very different conformational temperature. Resorting to the QRRHO corrections would result in a less realistic temperature above 300 K (dashed lines in Figure 8).

c) Localisation of the electronic transitions.

Two chromophores are present in the dimer, which gives rise to two electronic transitions as observed in hydrogen-bound⁵⁰ or dispersion-bound dimers⁵¹ of aromatic molecules as well as bichromophoric systems.^{36, 49, 52, 53} The difference in electronic density describing the $S_1 \leftarrow S_0$ and $S_2 \leftarrow S_0$ transitions is shown in Figure 9. As expected from the presence of the benzene chromophore, these transitions are $\pi\pi^*$ transitions localised on the aromatic rings. For both homochiral and heterochiral insertion dimers, $S_1 \leftarrow S_0$ is located on the ring of the host. The higher-energy transition is located on the aromatic ring of the guest, which acts as an acceptor for the OH... π interaction. This upshift of the electronic transition is due to the decrease of the electrostatic interactions upon electronic excitation, due to the weakening of the OH... π hydrogen bond, and has been observed before.⁵⁴⁻⁵⁸

3) Comparison between homo and heterochiral dimers

A similar insertion structure is observed for both homochiral and heterochiral dimers, with similar hydrogen bonds and deformation energies. A structural difference lies in the fact that, due to the stereochemical constraints, the aromatic rings are facing each other in the heterochiral dimer while they are on opposite sides of the homochiral dimer. An increase in temperature strongly favours the addition dimers (see Figure 8) because addition complexes are less rigid, which makes them favoured at high temperature, entropic effects being more important there than the intrinsic hydrogen bond strength. Still, the insertion dimer is the most stable structure for the homochiral dimer, at 0 K and 300 K alike. For the heterochiral complex, the addition dimer is strongly stabilised at 300 K (by 3.7 kJ mol⁻¹) relative to the insertion. The same is obtained to a lesser extent (0.5 kJ/mol) using the B3LYP-D3BJ/6-311G++(d,p) values. However, a larger stability of the addition relative to the insertion heterochiral dimer would be in contradiction with the more intense and numerous bands assigned to the latter in the REMPI spectrum. Assuming that the oscillator strength of the



electronic transition and ionisation efficiency are identical for both heterochiral structures, these experimental findings would suggest a larger abundance of the insertion heterochiral dimer in our experimental conditions. Hence, the temperature at which the two heterochiral dimers are formed is likely lower than 300 K.

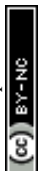
The calculated value of the chirodiastaltic energy is different whether ΔE_0 or ΔG is considered (see Figure 8 and Table S1), and also depends on the level of theory used. Homochiral preference is obtained at 0 K whatever the method used; $\Delta E_0(\text{hom-het})$ amounts to 1.6 kJ mol⁻¹ at the B3LYP-D3(BJ,abc)/ma-def2-TZVP level and 1.7 kJ mol⁻¹ for B3LYP-D3BJ/6-311G++(d,p), respectively. Note that when ΔE_0 is considered, the most stable homo- and heterochiral complexes are both insertion structures but when ΔG at 300 K is considered the most stable heterochiral structure is the addition dimer that would energetically win over the homochiral dimer by 1.3 kJ mol⁻¹ at 300 K. Changing the basis set from ma-def2-TZVP to 6-311G++(d,p) reverses this trend and retrieves the homochiral preference (by 2.3 kJ mol⁻¹) at 300 K.

The frequencies located on O_{2g}H and O_{1h}H are lower in the homochiral than the heterochiral dimer, suggesting stronger hydrogen bonds in the former. Non-Covalent (NCI) calculations^{59, 60} indeed indicate a slightly larger electron density for the intermolecular hydrogen bonds of the homochiral dimer (0.199 and 0.177 vs. 0.197 and 0.175 for the heterochiral dimer). This observation is compatible with a larger stability of the homochiral dimer, although it should be taken with caution as stronger hydrogen bonds do not always correlate with an overall larger stability.⁶¹ Introducing the QRRHO approximation allows retrieving a chirodiastaltic Gibbs free energy in favour of the homochiral dimer (1.8 kJ mol⁻¹), and an insertion heterochiral complex more stable than the addition structure, but would suggest a conformational temperature in the jet close to room temperature. Still, there are concordant indications in favour of a homochiral preference, although each taken separately (energy at 0 K, relative intensities in the electronic spectrum, down shift of the $\nu(\text{OH})$) is not sufficiently conclusive.

The heterochiral dimer shows more conformational flexibility than the homochiral one as it exists in two forms. A larger conformational flexibility has been observed already for the less stable configuration of chiral systems, for example heterochiral peptides, or protonated methyl tartrate dimers,^{62 52, 63} or the homochiral 1-indanol dimer.¹¹ A larger conformational flexibility of the homochiral adduct was observed as well for the *trans*-CD dimer for which the most stable calculated dimer is heterochiral.²³

4) Comparison with *cis*- and *trans*-1,2-cyclohexanediol

We shall now compare the structures described above to those obtained for similar systems, namely, *cis*- and *trans*-CD. The hydrogen bond patterns observed for the most stable dimers of the three systems at low temperature are sketched in Figure 10. Further possible hydrogen bond patterns are sketched in Figure S5 of the Supplementary Information. The energetics of the *cis*-CD, *trans*-CD and *cis*-PCD dimers are summarised in Figure 11.



The Raman spectrum of *cis*-CD,⁴⁶ taken with experimental conditions optimised for dimer formation, is shown in Figure 12. It has one dominant band at 3419 cm⁻¹, which is predicted to arise mainly from the most stable transiently heterochiral dimer, whereas the most likely similarly abundant transiently homochiral dimer is spread over several conformations and weaker transitions at lower and mostly at higher wavenumber. The lack of conformational selectivity prevents any further spectral assignment, but the calculations suggest that the homo- and heterochiral dimers have a very different hydrogen bond topology. Similar to *trans*-CD, a heterochiral quadruple insertion dimer is predicted to be the most stable dimer with other hetero- and homo-chiral dimers being significantly higher in energy, although not quite as pronounced as for *trans*-CD ($\Delta E_0(\text{hom-het})$ for *cis*-CD is 3.8 kJ mol⁻¹ vs. 6.6 kJ mol⁻¹ for *trans*-CD at the B3LYP-D3/ma-def2-TZVP level). The analogy to *trans*-CD also holds for the homochiral dimers with the most stable ones being close in energy as well as structurally related. Of these four dimers a cyclic structure (two intermolecular and two intramolecular hydrogen bonds) is energetically favoured. The somewhat surprising similarity between *cis*-CD and *trans*-CD can be explained by the fact that the O-C-C-O dihedral angles of the diol subunit are still quite similar. Hence, the fact that the chiral preference in *cis*-PCD is inverted can most likely be attributed to the introduction of the phenyl group. The most stable homochiral cyclic (double addition) pattern contrasts to that at play in the homochiral *cis*-PCD dimer that involves two intermolecular and one intramolecular OH...O interactions. This is because the aromatic ring electrons compete with the oxygen as a hydrogen bond acceptor; both homochiral and heterochiral *cis*-PCD insertion dimers involve indeed an OH... π interaction. Calculations confirm that there is little similarity between the most stable complexes of *cis*-PCD and *cis*-CD in a 10 kJ mol⁻¹ window (see Figure 11 and Figure 13). The conformational locking induced by the phenyl on the *cis*-PCD monomer also exists for its dimers, as shown by the much higher density of structures for *cis*-CD. The insertion dimer is indeed the only homochiral stable structure in a 5 kJ mol⁻¹ window at low temperature (see Figure 8). In *cis*-PCD, the chirodiastaltic energy favours the homochiral complex. This contrasts to what is calculated for *trans*-CD or *cis*-CD for which the most stable calculated dimer is the heterochiral one ($\Delta E_0=6.6$ kJ mol⁻¹ and 3.8 kJ mol⁻¹, respectively, at the B3LYP-D3/ma-def2-TZVP level) due to its structure (quadruple insertion) that optimises the number of hydrogen bonds. The energetics sketched in Figure 11 illustrate the main points of the comparison between the different systems. The lesser density of structures for *cis*-PCD, independently of chirality, illustrates the conformational locking induced by the aromatic ring. Both *cis*- and *trans*-CD show heterochiral preference with a quadruple insertion structure, which contrast with *cis*-PCD that shows homochiral preference. On a common energy scale where the most stable dimer irrespective of relative chirality is aligned, the most stable homochiral dimer of *cis*-CD is destabilised by ~ 5 kJ mol⁻¹ when adding an aromatic ring, because of the steric hindrance brought by the latter. Conversely, the most stable homochiral *cis*-PCD dimer is stabilised by ~ 9 kJ mol⁻¹ relative to the equivalent in CD.

5) Structure of the solid state.



(*R,R*) enantiopure and racemic *cis*-PCD samples have been dissolved in ethanol and allowed to crystallise slowly, resulting in long needle-shaped crystals. The X-ray diffraction pattern of both samples has been recorded following the procedure described in the ESI. The enantiopure crystal belongs to the monoclinic Sohncke group C2, characterised by a two-fold rotation axis and a two-fold screw axis. The unit cell, displayed in Figure 14a, contains two non-equivalent monomers interacting via two intermolecular hydrogen bonds, in what can be called an addition structure. The superimposed structure of the two monomers are shown in Figure S6 of the ESI. The structure of one of the monomers is close to M_1' , with an $O_1H_1 \cdots O_2$ hydrogen bond, while the other is close to M_2 with an $O_2H_2 \cdots O_1$ interaction. The dangling OH of each monomer binds to the monomer of same nature in a neighbouring dimer, resulting in long hydrogen-bonded chains that explain the needle-like appearance of the crystal (Figure 14b). The racemic *cis*-PCD is a conglomerate composed of a 50/50 mixture of (*R,R*) and (*S,S*) crystals. In the solid phase as well, homochiral preference is therefore observed. This contrasts to *trans*-CD whose racemic crystal crystallises as a racemate in the C 2/c space group, which contains an inversion centre.²⁴ The asymmetric unit is a *trans*-CD monomer that converts into its enantiomer *via* the inversion operation, resulting in a similar addition dimer, with monomers in a geometry intermediate between M and M' ($\widehat{O_1O_2H}$ angle of 131°).

Conclusion

The spectroscopic study of the chiral diol *cis*-PCD and its dimer emphasises several differences relative to the previously studied permanently chiral *trans*-CD and the transiently chiral *cis*-CD diols further explored in this work. First, the steric hindrance due to the bulky phenyl ring, in addition to its hydrogen bond acceptor capability that allows formation of an OH... π hydrogen bond, induces conformational locking in *cis*-PCD relative to *cis*-CD and decreases the number of populated conformers. *cis*-PCD exists therefore in one conformer only under supersonic jet conditions. The most stable structure of both homochiral and heterochiral dimers of *cis*-PCD at low temperature is an insertion structure, with the O_2H group of the guest inserted in the intramolecular hydrogen bond of the host. With increasing temperature, competition by more floppy addition complexes sets in, first in the heterochiral case, as also evidenced by experiment. The homochiral preference observed for cold *cis*-PCD contrasts to what was observed in *trans*-CD and *cis*-CD for which the predicted heterochiral preference is explained by the formation of an outstandingly stable heterochiral dimer that optimises the number of possible hydrogen bonds *via* a quadruple insertion structure. Due to the strong similarities between *cis*-CD and *trans*-CD, it is clear that the changes in clustering propensity of *cis*-PCD are due to the presence of the phenyl substituent rather than the consequences of *cis-trans* isomerism. These findings at the molecular level parallel those in the crystal, as racemic *cis*-PCD is a conglomerate while *trans*-CD is a racemate.

Crystallographic Data



CCDC 2277624 contains the supplementary crystallographic data for this paper. These data can be obtained free of charge from the Cambridge Crystallographic Data Centre and Fachinformationszentrum Karlsruhe via <http://www.ccdc.cam.ac.uk/structures/>.

Acknowledgments

Funding by the Deutsche Forschungsgemeinschaft (DFG, German Research Foundation) - 389479699/GRK2455 and 405832858 for computational resources is acknowledged.

References

1. I. Myrgorodska, C. Meinert, S. V. Hoffmann, N. C. Jones, L. Nahon and U. J. Meierhenrich, *Chempluschem*, 2017, **82**, 74-87.
2. J. Podlech, *Cellular and Molecular Life Sciences*, 2001, **58**, 44-60.
3. W. A. Bonner, *Origins of Life and Evolution of the Biosphere*, 1995, **25**, 175-190.
4. R. Sudha and M. F. Jarrold, *Journal of Physical Chemistry B*, 2005, **109**, 11777-11780.
5. T. Rekis, *Acta Crystallographica Section B-Structural Science Crystal Engineering and Materials*, 2020, **76**, 307-315.
6. C. Brandel, S. Petit, Y. Cartigny and G. Coquerel, *Current Pharmaceutical Design*, 2016, **22**, 4929-4941.
7. A. Otero-de-la-Roza, J. E. Hein and E. R. Johnson, *Crystal Growth & Design*, 2016, **16**, 6055-6059.
8. L. Pasteur, *C. R. Acad. Sci.*, 1853, **37**, 162.
9. A. Zehnacker, *International Reviews in Physical Chemistry*, 2014, **33**, 151-207.
10. A. Zehnacker and M. A. Suhm, *Angewandte Chemie-International Edition*, 2008, **47**, 6970-6992.
11. J. Altnoeder, A. Bouchet, J. J. Lee, K. E. Otto, M. A. Suhm and A. Zehnacker-Rentien, *Physical Chemistry Chemical Physics*, 2013, **15**, 10167-10180.
12. X. C. Liu, N. Borho and Y. J. Xu, *Chemistry-a European Journal*, 2009, **15**, 270-277.
13. W. H. Pirkle and T. C. Pochapsky, *Chemical Reviews*, 1989, **89**, 347-362.
14. N. Borho and M. A. Suhm, *Organic & Biomolecular Chemistry*, 2003, **1**, 4351-4358.
15. N. Borho and M. A. Suhm, *Physical Chemistry Chemical Physics*, 2004, **6**, 2885-2890.
16. T. B. Adler, N. Borho, M. Reiher and M. A. Suhm, *Angewandte Chemie-International Edition*, 2006, **45**, 3440-3445.
17. A. Bouchet, J. Klyne, S.-i. Ishiuchi, O. Dopfer, M. Fujii and A. Zehnacker, *Physical Chemistry Chemical Physics*, 2018, **20**, 12430-12443.
18. D. F. Plusquellic, F. J. Lovas, B. H. Pate, J. L. Neill, M. T. Muckle and A. J. Remijan, *Journal of Physical Chemistry A*, 2009, **113**, 12911-12918.
19. F. Kollipost, K. E. Otto and M. A. Suhm, *Angew. Chem. Int. Ed.*, 2016, **55**, 4591-4595.
20. P. Asselin, B. Madebene, P. Soulard, R. Georges, M. Goubet, T. R. Huet, O. Piralì and A. Zehnacker-Rentien, *Journal of Chemical Physics*, 2016, **145**.
21. R. Medel, A. Camiruaga, R. T. Saragi, P. Pinacho, C. Perez, M. Schnell, A. Lesarri, M. A. Suhm and J. A. Fernandez, *Physical Chemistry Chemical Physics*, 2021, **23**, 23610-23624.



22. T. Scharge, T. Haber and M. A. Suhm, *Physical Chemistry Chemical Physics*, 2006, **8**, 4664-4667. Article Online
DOI:10.1039/B4CP00351A
23. B. Hartwig, M. Lange, A. Poblitzki, R. Medel, A. Zehnacker and M. A. Suhm, *Physical Chemistry Chemical Physics*, 2020, **22**, 1122-1136.
24. S. Jahnigen, A. Zehnacker and R. Vuilleumier, *Journal of Physical Chemistry Letters*, 2021, **12**, 7213-7220.
25. N. Seurre, J. Sepiol, K. Le Barbu-Debus, F. Lahmani and A. Zehnacker-Rentien, *Physical Chemistry Chemical Physics*, 2004, **6**, 2867-2877.
26. N. Seurre, J. Sepiol, F. Lahmani, A. Zehnacker-Rentien and K. Le Barbu-Debus, *Physical Chemistry Chemical Physics*, 2004, **6**, 4658-4664.
27. R. Medel and M. A. Suhm, *Physical Chemistry Chemical Physics*, 2020, **22**, 25538-25551.
28. D. Scuderi, K. Le Barbu-Debus and A. Zehnacker, *Physical Chemistry Chemical Physics*, 2011, **13**, 17916-17929.
29. R. N. Pribble and T. S. Zwier, *Science*, 1994, **265**, 75-79.
30. S. Tanabe, T. Ebata, M. Fujii and N. Mikami, *Chemical Physics Letters*, 1993, **215**, 347-352.
31. A. Sen, A. Bouchet, V. Lepère, K. Le Barbu-Debus, D. Scuderi, F. Piuze and A. Zehnacker-Rentien, *The Journal of Physical Chemistry A*, 2012, **116**, 8334-8344.
32. R. A. Marta, R. H. Wu, K. R. Eldridge, J. K. Martens and T. B. McMahon, *International Journal of Mass Spectrometry*, 2010, **297**, 76-84.
33. M. J. Frisch, J. A. Pople and J. S. Binkley, *Journal of Chemical Physics*, 1984, **80**, 3265-3269.
34. S. Grimme, J. Antony, S. Ehrlich and H. Krieg, *Journal of Chemical Physics*, 2010, **132**, 154104.
35. S. Grimme, S. Ehrlich and L. Goerigk, *Journal of Computational Chemistry*, 2011, **32**, 1456-1465.
36. F. BenNasr, A. Pérez-Mellor, I. Alata, V. Lepere, N. E. Jaidane and A. Zehnacker, *Faraday Discussions*, 2018, **212**, 399-419.
37. M. D. Halls, J. Velkovski and H. B. Schlegel, *Theoretical Chemistry Accounts*, 2001, **105**, 413.
38. K. Le Barbu-Debus, in *Chiral Recognition in the Gas Phase*, ed. A. Zehnacker, CRC Press Taylor and Francis, Boca Raton, 2010, ch. 4, pp. 47-59.
39. N. Borho, M. A. Suhm, K. Le Barbu-Debus and A. Zehnacker, *Physical Chemistry Chemical Physics*, 2006, **8**, 4449-4460.
40. M. J. Frisch, G. W. Trucks, H. B. Schlegel, G. E. Scuseria, M. A. Robb, J. R. Cheeseman, G. Scalmani, V. Barone, G. A. Petersson, H. Nakatsuji, X. Li, M. Caricato, A. V. Marenich, J. Bloino, B. G. Janesko, R. Gomperts, B. Mennucci, H. P. Hratchian, J. V. Ortiz, A. F. Izmaylov, J. L. Sonnenberg, Williams, F. Ding, F. Lipparini, F. Egidi, J. Goings, B. Peng, A. Petrone, T. Henderson, D. Ranasinghe, V. G. Zakrzewski, J. Gao, N. Rega, G. Zheng, W. Liang, M. Hada, M. Ehara, K. Toyota, R. Fukuda, J. Hasegawa, M. Ishida, T. Nakajima, Y. Honda, O. Kitao, H. Nakai, T. Vreven, K. Throssell, J. A. Montgomery Jr., J. E. Peralta, F. Ogliaro, M. J. Bearpark, J. J. Heyd, E. N. Brothers, K. N. Kudin, V. N. Staroverov, T. A. Keith, R. Kobayashi, J. Normand, K. Raghavachari, A. P. Rendell, J. C. Burant, S. S. Iyengar, J. Tomasi, M. Cossi, J. M. Millam, M. Klene, C. Adamo, R. Cammi, J. W. Ochterski, R. L. Martin, K. Morokuma, O. Farkas, J. B. Foresman and D. J. Fox, *Journal*, 2016.
41. J. Zheng, X. Xu and D. G. Truhlar, *Theoretical Chemistry Accounts*, 2011, **128**, 295-305.



42. F. Weigend and R. Ahlrichs, *Physical Chemistry Chemical Physics*, 2005, **7**, 3297. Article Online
DOI: 10.1039/B4CP00351A
3305.
43. F. Neese, *Wiley Interdiscip. Rev.: Comput. Mol. Sci.*, 2017, **8**, e1327.
44. S. Grimme, *Chemistry-a European Journal*, 2012, **18**, 9955-9964.
45. R. S. Ruoff, T. D. Klots, T. Emilsson and H. S. Gutowsky, *Journal of Chemical Physics*, 1990, **93**, 3142-3150.
46. B. Hartwig and M. A. Suhm, *Physical Chemistry Chemical Physics*, 2021, **23**, 21623-21640.
47. M. Broquier, F. Lahmani, A. Zehnacker-Rentien, V. Brenner, P. Millie and A. Peremans, *Journal of Physical Chemistry A*, 2001, **105**, 6841-6850.
48. R. W. Larsen and M. A. Suhm, *Journal of Chemical Physics*, 2006, **125**, 154314.
49. A. Zehnacker, F. Lahmani, E. Breheret, J. P. Desvergne, H. BouasLaurent, A. Germain, V. Brenner and P. Millie, *Chemical Physics*, 1996, **208**, 243-257.
50. N. M. Kidwell, B. Nebgen, L. V. Slipchenko and T. S. Zwier, *Journal of Chemical Physics*, 2019, **151**, 084313.
51. U. Erlekam, M. Frankowski, G. von Helden and G. Meijer, *Physical Chemistry Chemical Physics*, 2007, **9**, 3786-3789.
52. J. Dupont, R. Guillot, V. Lepère and A. Zehnacker, *Journal of Molecular Structure*, 2022, **1262**, 133059.
53. A. Pérez-Mellor, I. Alata, V. Lepere and A. Zehnacker, *Journal of Molecular Spectroscopy*, 2018, **349**, 71-84.
54. K. Le Barbu, F. Lahmani and A. Zehnacker-Rentien, *Journal of Physical Chemistry A*, 2002, **106**, 6271-6278.
55. K. Le Barbu, F. Lahmani, M. Mons, M. Broquier and A. Zehnacker, *Physical Chemistry Chemical Physics*, 2001, **3**, 4684-4688.
56. C. E. H. Dessent, W. D. Geppert, S. Ullrich and K. Muller-Dethlefs, *Chemical Physics Letters*, 2000, **319**, 375-384.
57. M. Mons, I. Dimicoli, B. Tardivel, F. Piuzzi, V. Brenner and P. Millie, *Journal of Physical Chemistry A*, 1999, **103**, 9958-9965.
58. C. J. Gruenloh, F. C. Hagemester, J. R. Carney and T. S. Zwier, *Journal of Physical Chemistry A*, 1999, **103**, 503-513.
59. R. Chaudret, B. d. Courcy, J. Contreras-Garcia, E. Gloaguen, A. Zehnacker-Rentien, M. Mons and J. P. Piquemal, *Physical Chemistry Chemical Physics*, 2014, **16**, 9876-9891.
60. E. R. Johnson, S. Keinan, P. Mori-Sanchez, J. Contreras-Garcia, A. J. Cohen and W. Yang, *Journal of the American Chemical Society*, 2010, **132**, 6498-6506.
61. P. Hurtado, F. Gamez, S. Hamad, B. Martinez-Haya, J. D. Steill and J. Oomens, *Journal of Chemical Physics*, 2012, **136**.
62. V. Lepere, K. Le Barbu-Debus, C. Clavaguera, D. Scuderi, G. Piani, A.-L. Simon, F. Chirot, L. MacAleese, P. Dugourd and A. Zehnacker, *Physical Chemistry Chemical Physics*, 2016, **18**, 1807-1817.
63. K. Le Barbu-Debus, D. Scuderi, V. Lepere and A. Zehnacker, *Journal of Molecular Structure*, 2020, **1205**, 127583.



FIGURES

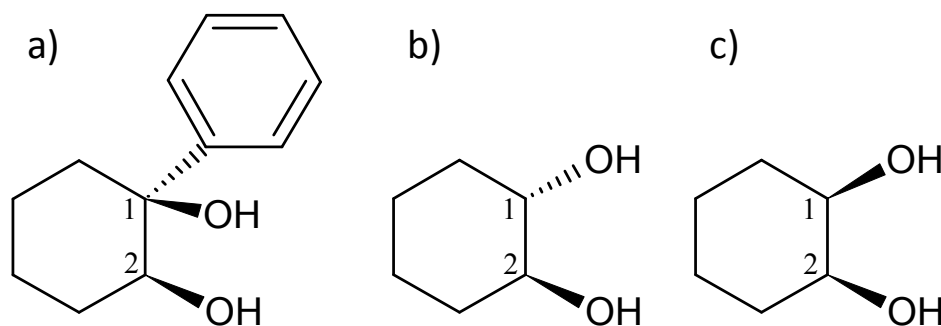
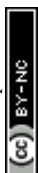
View Article Online
DOI: 10.1039/D4CP00351A

Figure 1: Scheme and atom numbering for a) *(S,S)*-(+)-1-phenylcyclohexane-*cis*-1,2-diol (*cis*-PCD) b) *(1S,2S)*-*trans*-1,2-cyclohexanediol (*trans*-CD) c) *cis*-1,2-cyclohexanediol (*cis*-CD)



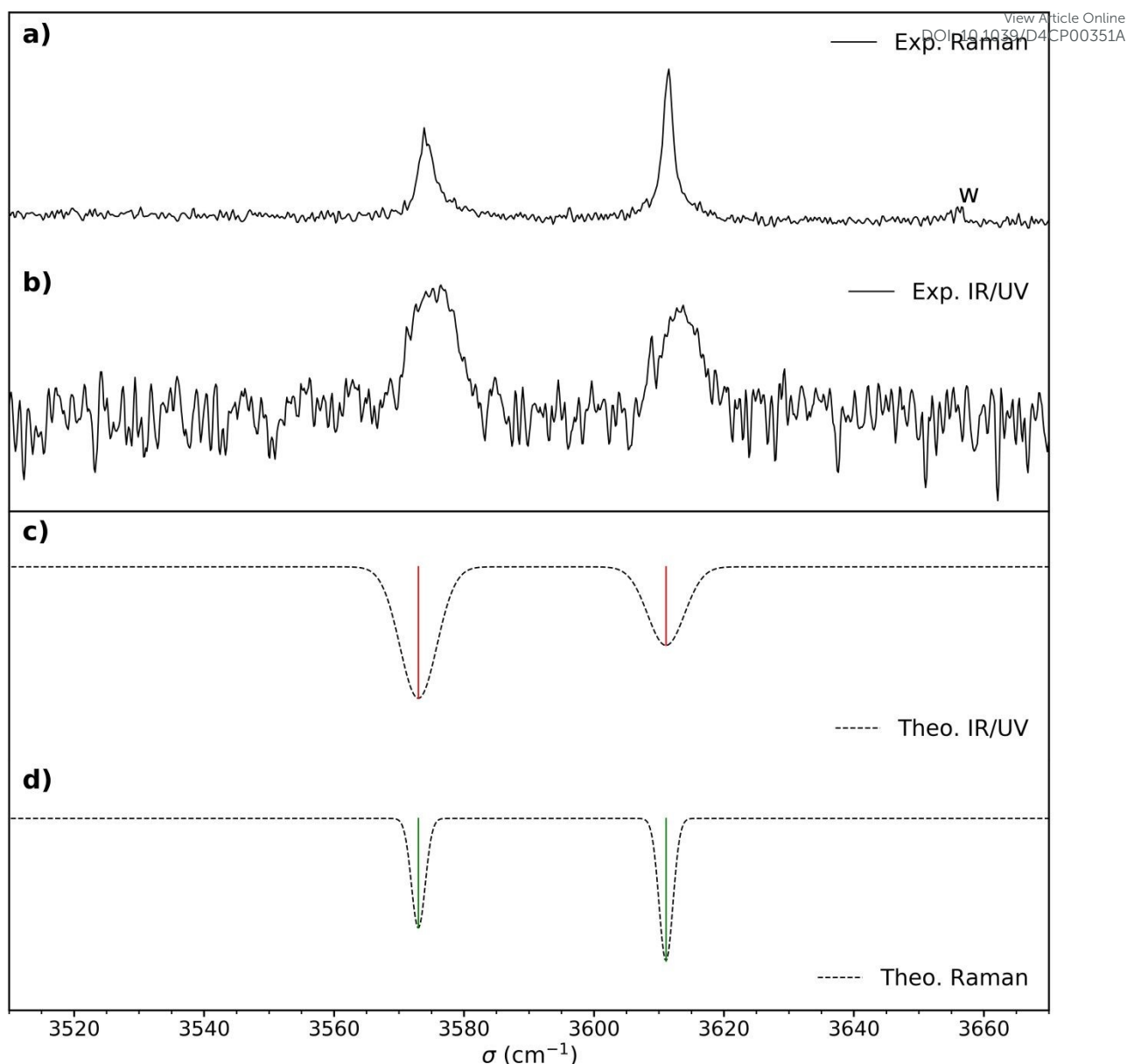
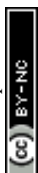


Figure 2: a) Raman spectrum of *cis*-PCD. “w” denotes a water impurity signal. b) Double resonance spectrum of the monomer obtained by setting the UV probe on the transition origin at 37766 cm^{-1} . c) IR Spectrum simulated for the most stable structure M_1 , shown in Figure 4, obtained from the B3LYP-D3(BJ,abc)/ma-def2-TZVP empirically corrected harmonic frequencies. d) Simulated Raman spectrum obtained from the empirically corrected harmonic B3LYP-D3(BJ,abc)/ma-def2-TZVP frequencies. The computed harmonic frequencies have been corrected by a recently proposed empirical correction model (see text and Ref.⁴⁶). A Gaussian line profile is assumed with a full width at half maximum of 4 cm^{-1} and 1.5 cm^{-1} for the IR/UV and Raman spectra, respectively. Scaled B3LYP-D3(BJ,abc)/ma-def2-TZVP or B3LYP-D3(BJ)/6-311++G(d,p) harmonic frequencies calculations yield similar results.



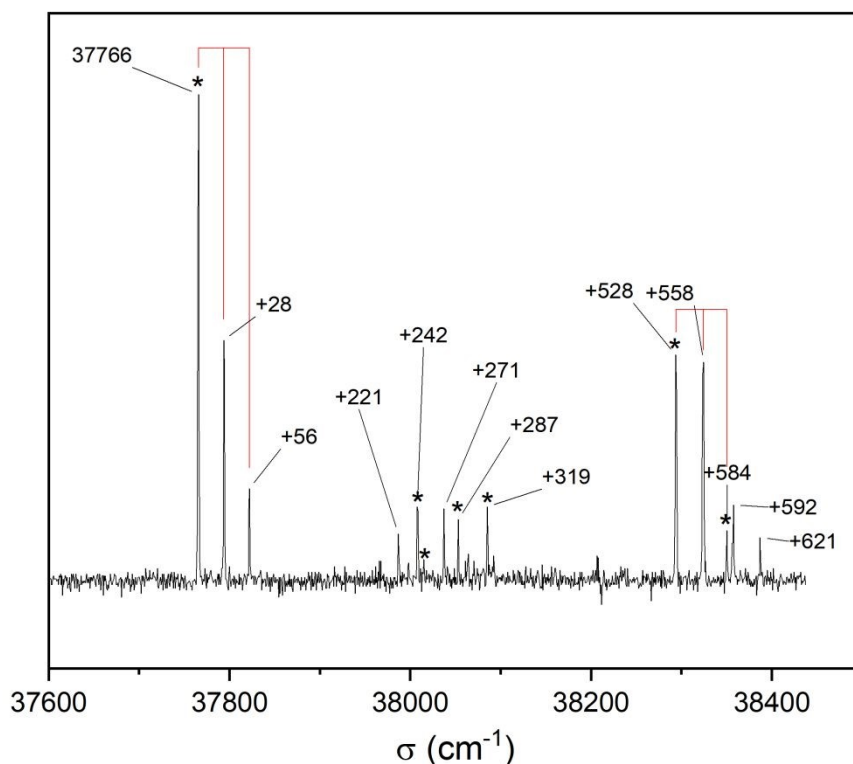


Figure 3: REMPI $S_1 \leftarrow S_0$ electronic spectrum of the monomer obtained by monitoring its mass at m/z 192 as a function of the laser wavenumber. The 28 cm^{-1} progression is materialised by vertical lines. The IR-UV spectra were recorded by setting the probe on the electronic transitions indicated by *.

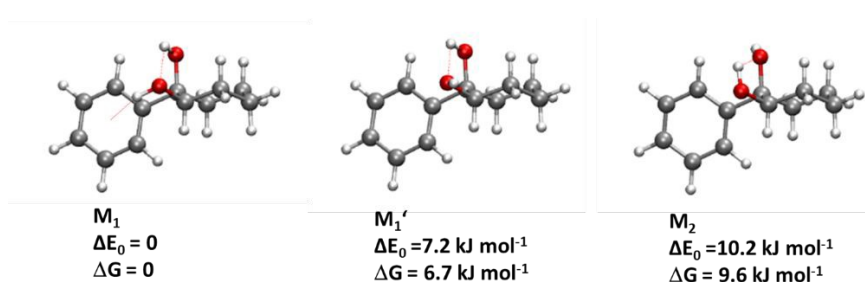


Figure 4: Most stable structures of the PCH monomer, together with relative zero-point corrected energy ΔE_0 and relative Gibbs energy at room-temperature ΔG , calculated at the B3LYP-D3(BJ,abc)/ma-def2-TZVP level. The OH...O and OH... π hydrogen bonds are shown by red dashed lines.



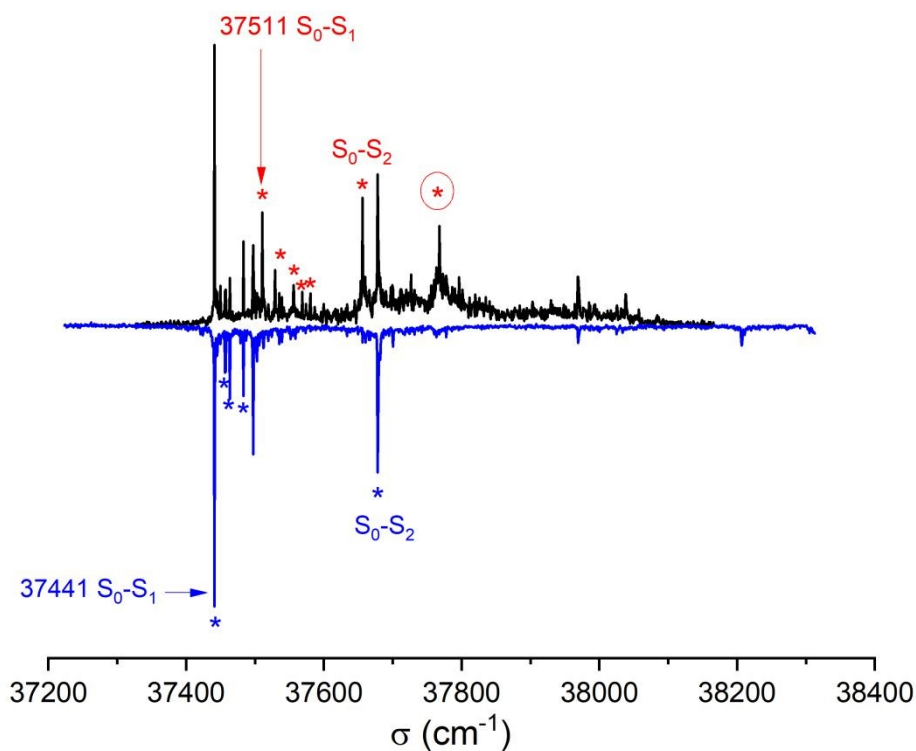
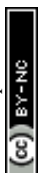


Figure 5: REMPI electronic spectrum of the *cis*-PCD dimer for the enantiopure mixture (bottom, blue line) and the racemic sample (top, black line) obtained by monitoring its mass at m/z 384 as a function of the laser wavenumber. The transitions used as a probe for the IR-UV experiments are indicated by asterisks (see text). The numbers give the position of the $S_1 \leftarrow S_0$ transition origins of the homochiral and heterochiral complexes.



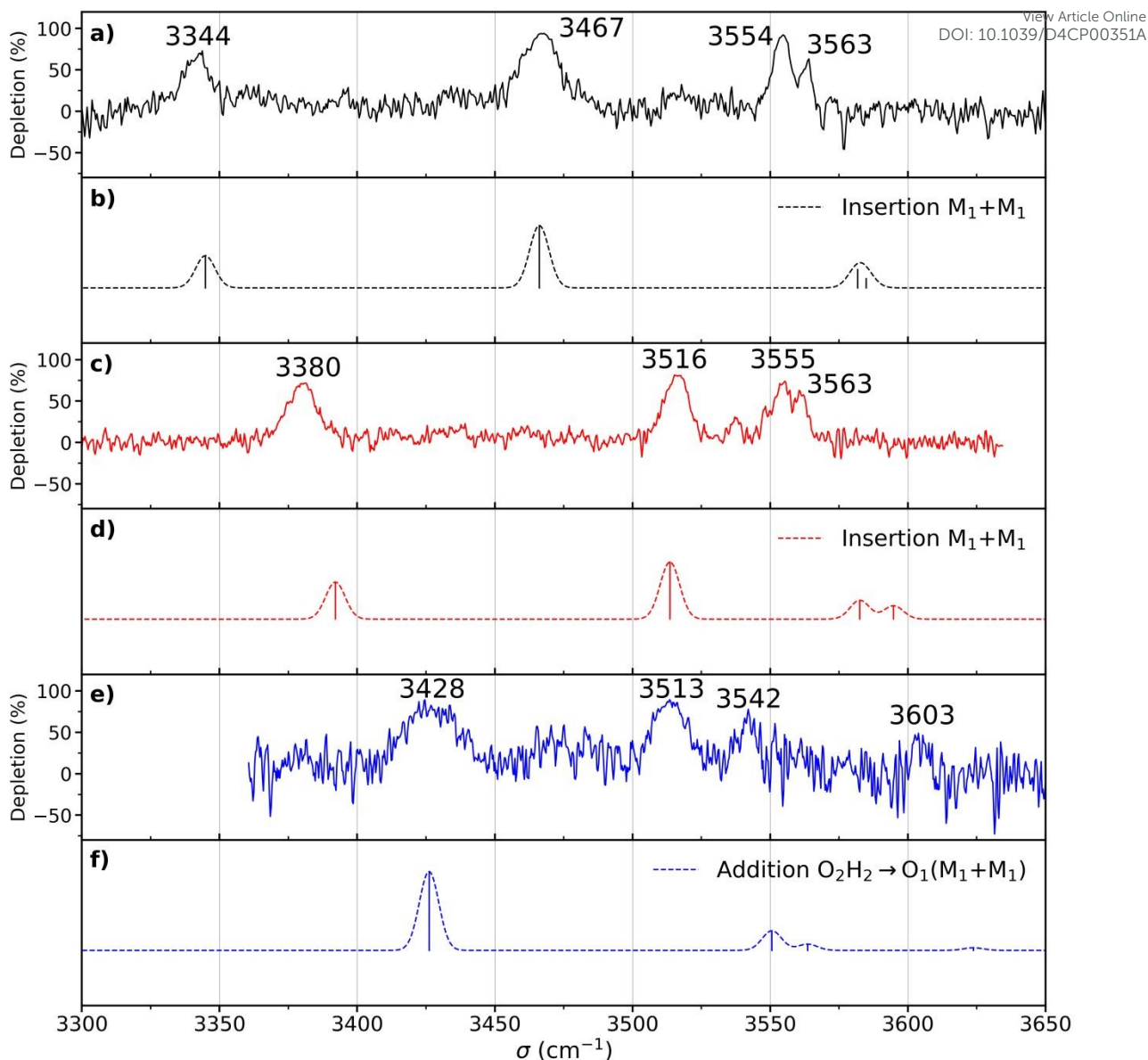
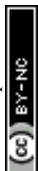
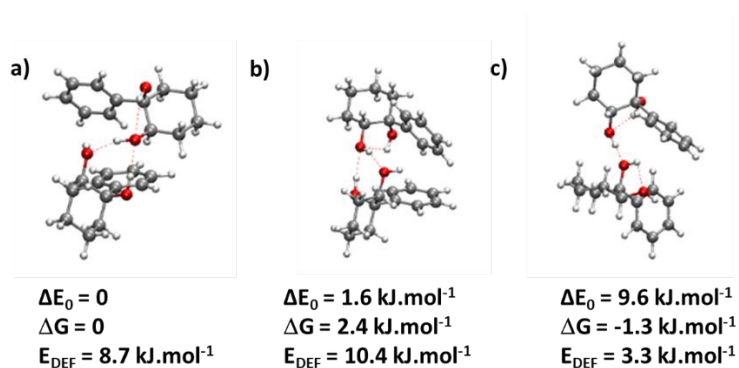


Figure 6: a) Experimental double resonance spectrum of the homochiral dimer recorded by setting the probe on the transition origin at 37441 cm^{-1} . b) Simulated spectrum of the most stable structure of the homochiral dimer (insertion M_1+M_1). c) Experimental spectrum of the heterochiral dimer recorded by setting the probe on the transition origin at 37511 cm^{-1} . d) Simulated spectrum of the most stable structure (in terms of ΔE_0) of the heterochiral dimer (insertion M_1+M_1). e) Experimental spectrum of the heterochiral complex recorded by setting the probe on the transition at 37768 cm^{-1} . f) Simulated spectra of the most stable structure (judging by ΔG at 300 K) of the heterochiral dimer (Addition $O_2H_2 \dots O_1 M_1+M_1$). The theoretical spectra have been simulated using the scaled harmonic frequencies (scaling factor of 0.963) calculated at the B3LYP-D3(BJ,abc)/ma-def2-TZVP level and convoluted by a Gaussian profile (4 cm^{-1} FWHM).





View Article Online
 DOI: 10.1039/D4CP00351A

Figure 7: a) Most stable homochiral dimer of *cis*-1-phenylcyclohexane-1,2-diol: Insertion (M_1+M_1) b) Most stable heterochiral dimer of *cis*-1-phenylcyclohexane-1,2-diol (in terms of ΔE_0): Insertion (M_1+M_1) c) Most stable heterochiral dimer of *cis*-1-phenylcyclohexane-1,2-diol (in terms of ΔG at 300 K): Addition $O_2H_2 \rightarrow O_1$ (M_1+M_1). The red dotted lines show the OH...O hydrogen bonds. The zero of the energy scale is at the most stable homochiral dimer.



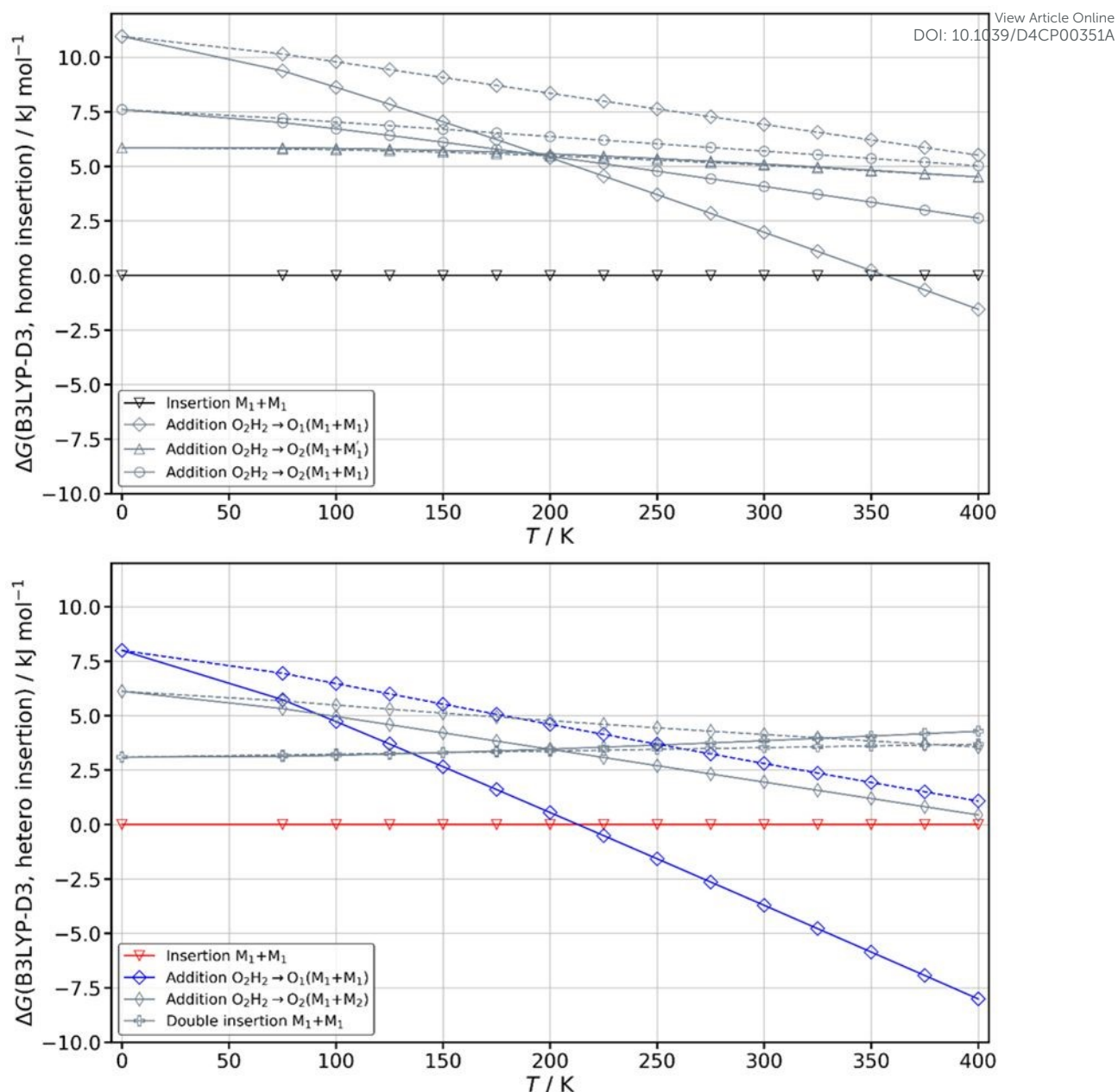
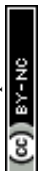


Figure 8: Variation of the Gibbs energy of the most stable calculated complexes as a function of the temperature computed at the B3LYP-D3(BJ,abc)/ma-def2-TZVP level of theory. The zero of the scale is taken at the most stable insertion structure of each dimer. Solid lines indicate the use of the Rigid Rotor Harmonic Oscillator (RRHO) approximation while dashed lines indicate the use of Grimme's Quasi Rigid Rotor Harmonic Oscillator (QRRHO) approximation.



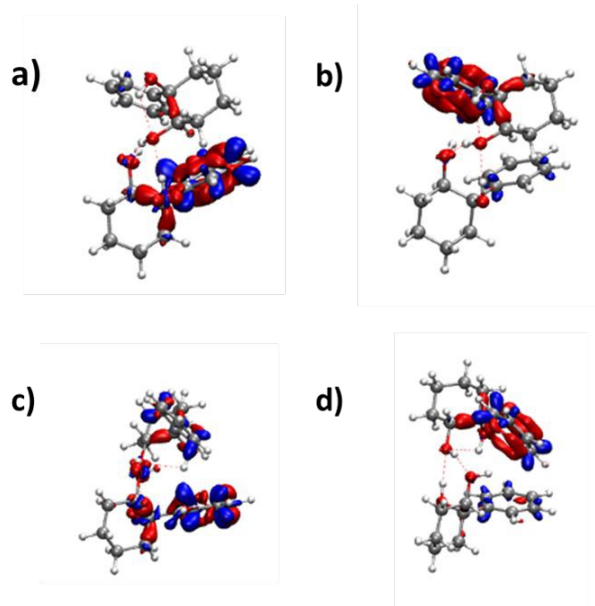


Figure 9: Difference in electronic density for a) the $S_1 \leftarrow S_0$ b) $S_2 \leftarrow S_0$ transitions of the insertion homochiral dimer c) the $S_1 \leftarrow S_0$ d) the $S_2 \leftarrow S_0$ transitions of the insertion heterochiral dimer.

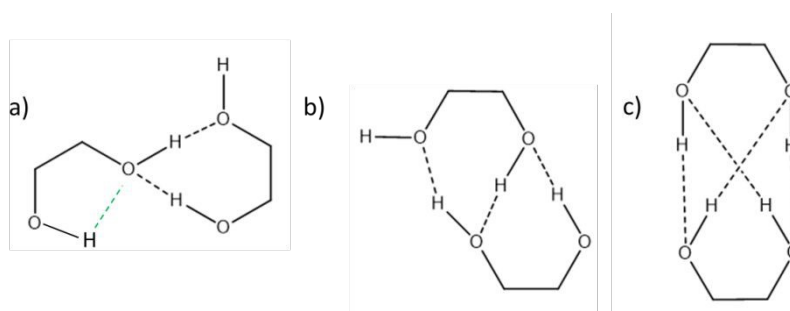


Figure 10: Hydrogen bond pattern observed in a) The most stable (in terms of ΔE_0) homochiral or heterochiral dimer of *cis*-PCD (insertion) b) The most stable homochiral dimer of *trans*- or *cis*-CD (double insertion) c) The most stable heterochiral dimer of *trans*- or *cis*-CD (quadruple insertion).



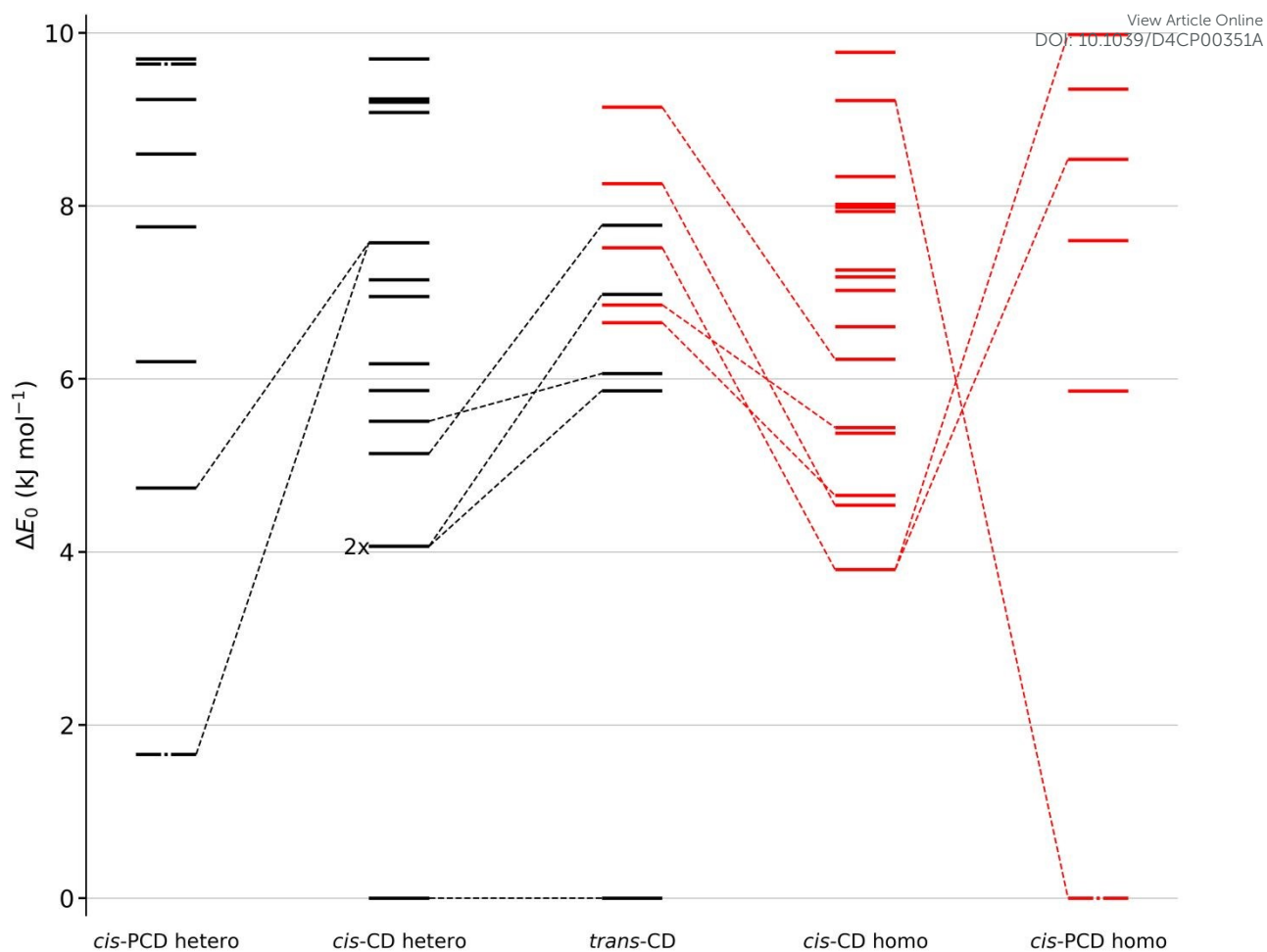


Figure 11: Comparison between the zero-point corrected energy landscape of the heterochiral dimers of *cis*-PCD (outer left) and *cis*-CD (middle left) as well as the homochiral dimers of *cis*-CD (middle right) and *cis*-PCD (outer right) up to 10 kJ/mol. Energy levels of homo-chiral and hetero-chiral dimers are shown in red and black, respectively. The three dashed-dotted energy levels of *cis*-PCD correspond to dimers which have been assigned experimentally. *cis*-CD conformers that converge to a corresponding conformer of *cis*-PCD after substitution by a phenyl and *vice versa* are linked by dashed lines. Additionally, the five most stable hetero- and homo-chiral conformers of *trans*-CD are shown and analogous *cis*-CD and *trans*-CD conformers are connected by dashed lines. Because the most stable (hetero-chiral, quadruple-insertion) structures are aligned at energy 0 for *cis*- and *trans*-CD, the downward slopes of the other *trans*-CD structures towards *cis*-CD show that the *cis* arrangement selectively destabilises this quadruple-insertion motif. The zero-point corrected energies have been calculated at the B3LYP-D3(BJ,abc)/ma-def2-TZVP level of theory. 2x indicates that two conformers are isoenergetic.



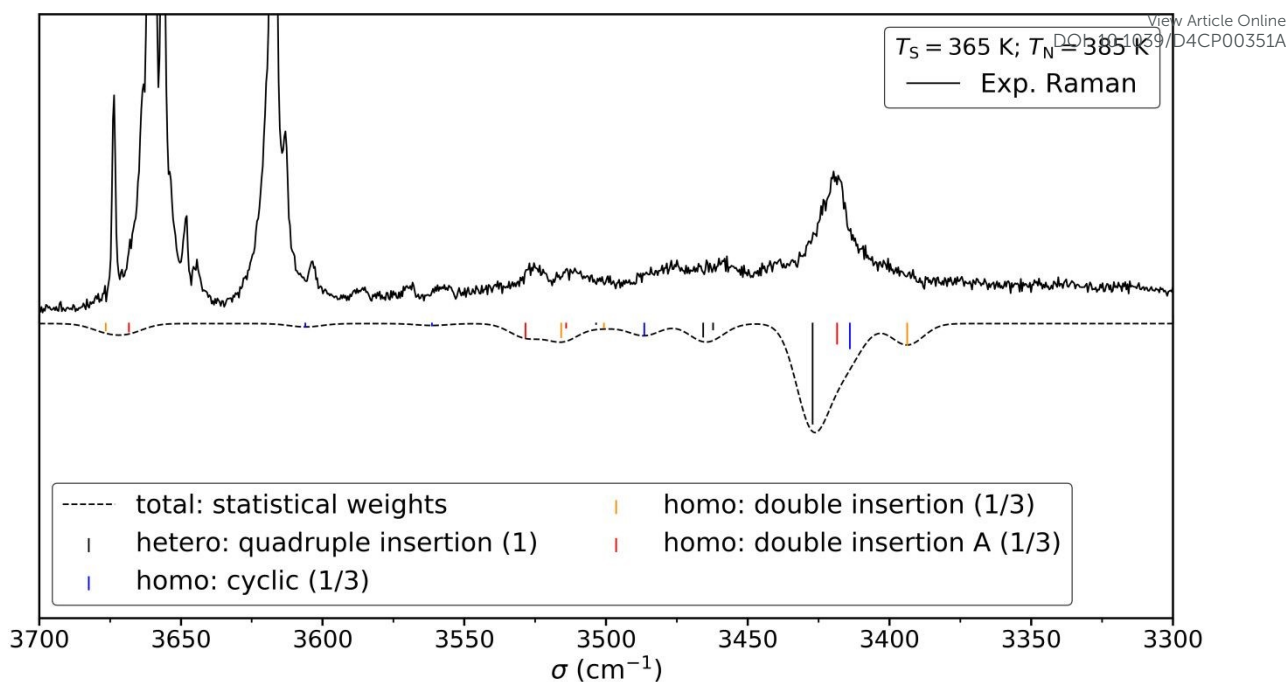
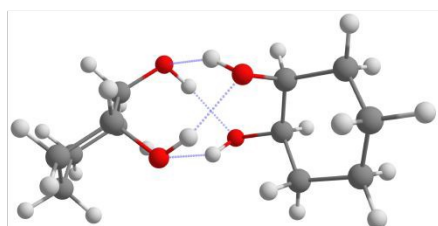


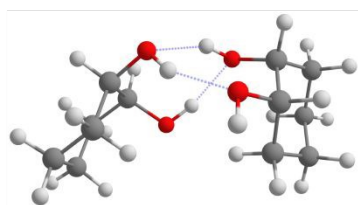
Figure 12: Comparison between the experimental (top) and simulated (bottom) Raman spectrum of *cis*-CD in 1.4 bar of helium. The saturator (365 K) and nozzle (385 K) temperatures have been optimised for dimer formation. Reasonable agreement can be found between the simulation and the experiment. See Figure 13 for depiction of the corresponding structures. For the simulation, it is assumed that homo- and hetero-chiral dimers are formed with equal likelihood. Furthermore, the three most stable homo-dimers are assumed to be isoenergetic and therefore the homo population is equally spread among them. Since the most stable hetero-chiral dimer is energetically unrivalled one arrives at statistical weights of 1 : 1/3 : 1/3 : 1/3 (quadruple insertion : cyclic : double insertion : double insertion A). Such an approach was previously successfully used for *trans*-CD. The simulation assumes Gaussian profile with a FWHM of 8 cm⁻¹.



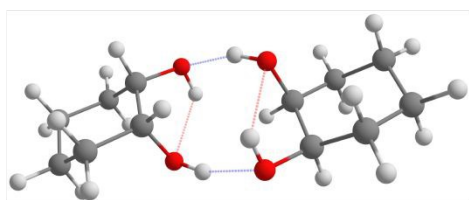
hetero-chiral



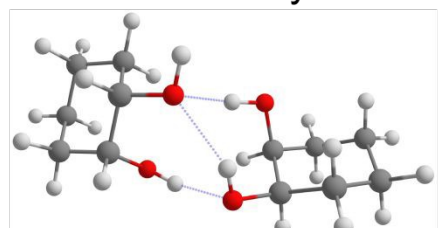
0 kJ/mol quadruple insertion



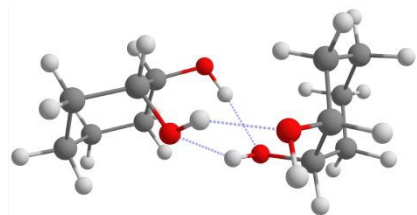
4.1 kJ/mol double insertion



4.1 kJ/mol cyclic

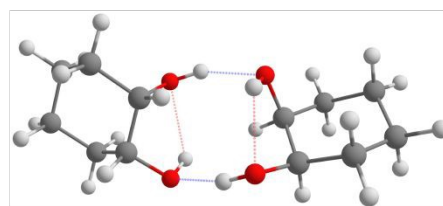


5.1 kJ/mol insertion addition

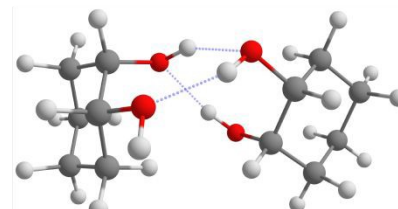


5.5 kJ/mol double insertion A

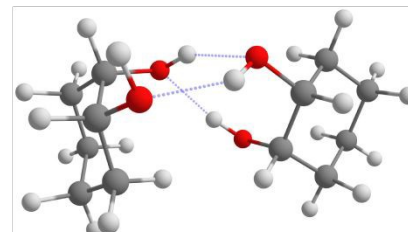
homo-chiral



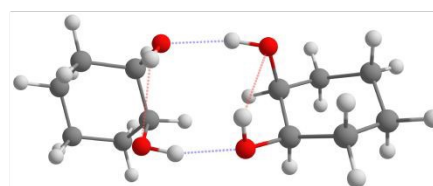
3.8 kJ/mol cyclic



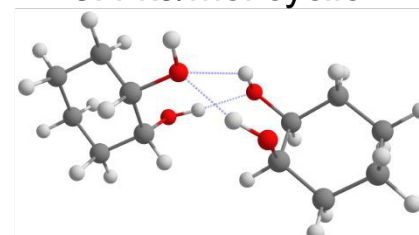
4.5 kJ/mol double insertion



4.7 kJ/mol double insertion A



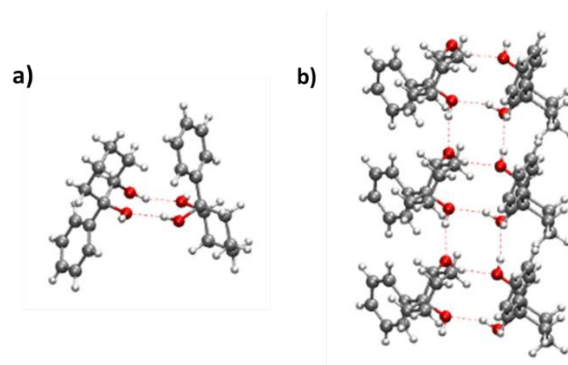
5.4 kJ/mol cyclic



5.4 kJ/mol insertion addition

Figure 13: Five most stable hetero- (left) and homo-chiral (right) dimers of *cis*-CD, respectively. The zero-point corrected energies at the B3LYP-D3(BJ,abc)/ma-def2-TZVP level are shown. Intermolecular hydrogen bonds are highlighted in blue and intramolecular ones in red.





View Article Online
DOI: 10.1039/D4CP00351A

Figure 14 a) Unit cell of the *cis*-PCD crystal b) Array of hydrogen bonded chains.

